

For Research Use Only

# FcZero-rAb® CoraLite® Plus 488 Anti-Human NKp46/NCR1 Rabbit Recombinant Antibody

Catalog Number: CL488-FcA98340



## Basic Information

<b>Catalog Number:</b> CL488-FcA98340	<b>GenBank Accession Number:</b> /	<b>Purification Method:</b> Protein A purification
<b>Concentration:</b> 100tests, 5 ul/test	<b>GeneID (NCBI):</b> 9437	<b>CloneNo.:</b> 242549D12
<b>Source:</b> Rabbit	<b>UNIPROT ID:</b> O76036-1	<b>Recommended Dilutions:</b> FC: 5 ul per 10 <sup>6</sup> cells in a 100 µl suspension
<b>Isotype:</b> IgG	<b>Full Name:</b> natural cytotoxicity triggering receptor 1	<b>Excitation/Emission maxima wavelengths:</b> 493 nm / 522 nm
<b>Immunogen Catalog Number:</b> EG1364	<b>Calculated MW:</b> 34kDa	

## Applications

<b>Tested Applications:</b> FC	<b>Positive Controls:</b> FC : human PBMCs,
<b>Species Specificity:</b> human	

## Background Information

NKp46, also known as NCR1 or CD335, is an Ig-like superfamily cell surface receptor that is highly conserved in mammals (PMID: 22021440). NKp46 is a type I transmembrane glycoprotein consisting of two extracellular Ig-like domains, a transmembrane domain, and an intracellular tail (PMID: 9730896). It is expressed on NK cells, rare T-cell subsets and a mucosal population of NKp46+ innate lymphoid cells (PMID: 9730896; 22021440). NKp46 is the major triggering receptor involved in the natural cytotoxicity (PMID: 10359120; 10092106; 15356098).

## Storage

**Storage:**  
Store at 2-8°C. Avoid exposure to light. Stable for one year after shipment.  
**Storage Buffer:**  
PBS with 0.09% sodium azide and 0.5% BSA, pH7.3

For technical support and original validation data for this product please contact:

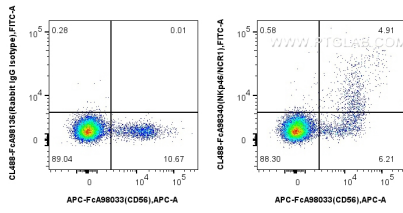
T: 4006900926

E: Proteintech-CN@ptglab.com

W: ptgcn.com

**This product is exclusively available under Proteintech Group brand and is not available to purchase from any other manufacturer.**

## Selected Validation Data



1x10<sup>6</sup> human PBMCs were surface stained with FcZero-rAb<sup>TM</sup> APC Anti-Human NCAM1/CD56, and 5 ul CoraLite<sup>®</sup> Plus 488 Anti-Human NKp46/NCR1 Rabbit RecAb (CL488-FcA98340, Clone: 242549D12) or FcZero-rAb<sup>TM</sup> CoraLite<sup>®</sup> Plus 488 Rabbit IgG Isotype Control Recombinant Antibody (CL488-FcA98136, Clone: 240953C9). Cells were not fixed.