

For Research Use Only

FcZero-rAb™ CoraLite®Plus 488 Anti-Human Integrin alpha-5/CD49e Rabbit Recombinant Antibody

Catalog Number: CL488-FcA98171



Basic Information

Catalog Number:

CL488-FcA98171

Concentration:

100 tests, 5 µl/test

Source:

Rabbit

Isotype:

IgG

GenBank Accession Number:

BC008786

GeneID (NCBI):

3678

UNIPROT ID:

P08648

Full Name:

integrin, alpha 5 (fibronectin receptor, alpha polypeptide)

Calculated MW:

115 kDa

Purification Method:

Protein A purification

CloneNo.:

241685D4

Recommended Dilutions:

FC: 5 µl per 10⁶ cells in a 100 µl suspension

Excitation/Emission maximum wavelengths:

491 nm / 516 nm

Applications

Tested Applications:

FC

Species Specificity:

human

Positive Controls:

FC : human PBMCs,

Background Information

Integrins are cell adhesion receptors that are heterodimers composed of non-covalently associated alpha and beta subunits. Integrin alpha-5 (ITGA5, also known as CD49e), belongs to the integrin alpha chain family, primarily binds to Integrin beta 1 (ITGB1) to form an $\alpha 5 \beta 1$ heterodimer (PMID: 33711961). Integrin $\alpha 5 \beta 1$ is a specific receptor of fibronectin through its arginine-glycine-aspartic acid (RGD) binding site (PMID: 19608542). Integrin $\alpha 5 \beta 1$ plays roles in cell adhesion, migration and matrix formation, and has emerged as an essential mediator in many human carcinomas (PMID: 33408483).

Storage

Storage:

Store at 2-8°C. Avoid exposure to light. Stable for one year after shipment.

Storage Buffer:

PBS with 0.09% sodium azide and 0.5% BSA, pH7.3

For technical support and original validation data for this product please contact:

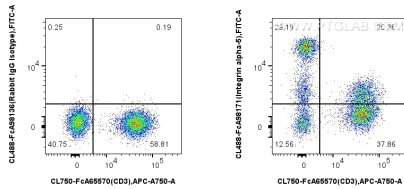
T: 4006900926

E: Proteintech-CN@ptglab.com

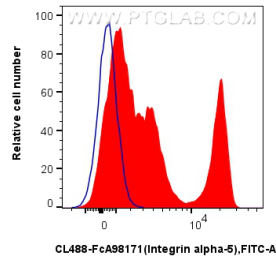
W: ptgcn.com

This product is exclusively available under Proteintech Group brand and is not available to purchase from any other manufacturer.

Selected Validation Data



1x10⁶ human PBMCs were surface stained with FcZero-rAb[™] CoraLite[®] Plus 750 Anti-Human CD3, and 5 ul CoraLite[®]488 Anti-Human Integrin alpha-5/CD49e Rabbit RecAb (CL488-FcA98171, Clone: 241685D4) or 5 ul FcZero-rAb[™] CoraLite[®] Plus 488 Rabbit IgG Isotype Control Recombinant Antibody (CL488-FcA98136, Clone: 240953C9). Cells were not fixed.



1x10⁶ human PBMCs were surface stained with 5 ul CoraLite[®]488 Anti-Human Integrin alpha-5/CD49e Rabbit RecAb (CL488-FcA98171, Clone: 241685D4) (red) or 5 ul FcZero-rAb[™] CoraLite[®] Plus 488 Rabbit IgG Isotype Control Recombinant Antibody (CL488-FcA98136, Clone: 240953C9) (blue). Cells were not fixed.