

For Research Use Only

FcZero-rAb® CoraLite® Plus 488 Anti-Human L1CAM/CD171 Rabbit Recombinant Antibody

Catalog Number: CL488-FcA98130



Basic Information

Catalog Number: CL488-FcA98130	GenBank Accession Number: BC126229	Purification Method: Protein A purification
Concentration: 100tests, 5 ul/test	GeneID (NCBI): 3897	CloneNo.: 240978A7
Source: Rabbit	UNIPROT ID: P32004	Recommended Dilutions: FC: 5 ul per 10 ⁶ cells in a 100 µl suspension
Isotype: IgG	Full Name: L1 cell adhesion molecule	Excitation/Emission maxima wavelengths: 493 nm / 522 nm
Immunogen Catalog Number: EG0209	Calculated MW: 1257 aa, 140 kDa	

Applications

Tested Applications: FC	Positive Controls: FC : SK-N-SH cells,
Species Specificity: human	

Background Information

L1CAM, also known as NCAM-L1 or CD171, is a cell adhesion molecule of the immunoglobulin superfamily. It is a 200-220 kDa transmembrane glycoprotein composed of six Ig-like domains and five fibronectin type III repeats followed by a transmembrane region and a highly conserved cytoplasmic tail (PMID: 3412448; 22796939). L1CAM is primarily expressed in the nervous system and is involved in neuron-neuron adhesion, neurite fasciculation, outgrowth of neurites, cerebellar granule cell migration, neurite outgrowth on Schwann cells and interactions among epithelial cells of intestinal crypts (PMID: 3412448; 10767310). L1CAM is overexpressed in many human cancers and is often associated with bad prognosis (PMID: 27267927; 26111503).

Storage

Storage:
Store at 2-8°C. Avoid exposure to light. Stable for one year after shipment.
Storage Buffer:
PBS with 0.09% sodium azide and 0.5% BSA, pH7.3

For technical support and original validation data for this product please contact:

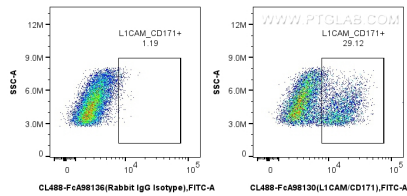
T: 4006900926

E: Proteintech-CN@ptglab.com

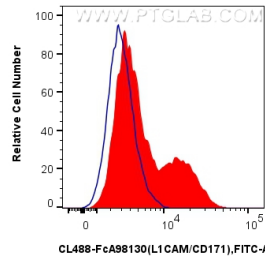
W: ptgcn.com

This product is exclusively available under Proteintech Group brand and is not available to purchase from any other manufacturer.

Selected Validation Data



1x10⁶ SK-N-SH cells were surface stained with 5 ul CoraLite® Plus 488 Anti-Human L1CAM/CD171 Rabbit RecAb (CL488-FcA98130, Clone: 240978A7) or FcZero-rAb® CoraLite® Plus 488 Rabbit IgG Isotype Control Recombinant Antibody (CL488-FcA98136, Clone: 240953C9). Cells were not fixed.



1x10⁶ SK-N-SH cells were surface stained with 5 ul CoraLite® Plus 488 Anti-Human L1CAM/CD171 Rabbit RecAb (CL488-FcA98130, Clone: 240978A7) (red) or FcZero-rAb® CoraLite® Plus 488 Rabbit IgG Isotype Control Recombinant Antibody (CL488-FcA98136, Clone: 240953C9) (blue). Cells were not fixed.