

For Research Use Only

FcZero-rAb™ CoraLite® Plus 488 Anti-Human B7-H3/CD276 Rabbit Recombinant Antibody

Catalog Number: CL488-FcA98017



Basic Information

Catalog Number:

CL488-FcA98017

Concentration:

100 tests, 5 µl/test

Source:

Rabbit

Isotype:

IgG

Immunogen Catalog Number:

EG0075

GenBank Accession Number:

NM_001024736

GeneID (NCBI):

80381

UNIPROT ID:

Q5ZPR3

Full Name:

CD276 molecule

Calculated MW:

57 kDa

Purification Method:

Protein A purification

CloneNo.:

230305A10

Recommended Dilutions:

FC: 5 µl per 10⁶ cells in a 100 µl

suspension

Excitation/Emission maxima

wavelengths:

493 nm / 522 nm

Applications

Tested Applications:

FC

Species Specificity:

human

Positive Controls:

FC : Human immature monocyte-derived dendritic cells,

Background Information

B7-H3 (CD276) is a type I transmembrane protein expressed on many tissues and cell types. B7-H3 is a 100-kDa glycoprotein that belongs to the B7 immunoregulatory family and participates in the regulation of T-cell-mediated immune response probably by functioning as both a T cell costimulator and coinhibitor (PMID: 25567370; 20696859). Overexpressed on a wide range of human solid cancers, B7-H3 has been implicated in cancer progression and metastasis and becomes an attractive target for cancer immunotherapy (PMID: 27208063).

Storage

Storage:

Store at 2-8°C. Avoid exposure to light. Stable for one year after shipment.

Storage Buffer:

PBS with 0.09% sodium azide and 0.5% BSA, pH7.3

For technical support and original validation data for this product please contact:

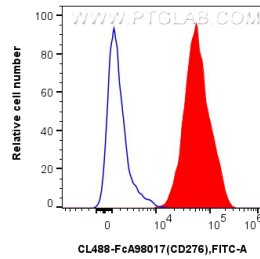
T: 4006900926

E: Proteintech-CN@ptglab.com

W: ptgcn.com

This product is exclusively available under Proteintech Group brand and is not available to purchase from any other manufacturer.

Selected Validation Data



1x10⁶ Human immature monocyte-derived dendritic cells were surface stained with 5 μ l CoraLite® Plus 488 Anti-Human B7-H3/CD276 Rabbit RecAb (CL488-FcA98017, Clone:230305A10) (red), or 5 μ l FcZero-rAb™ CoraLite® Plus 488 Rabbit IgG Isotype Control Recombinant Antibody (CL488-FcA98136, Clone: 240953C9) (blue). Cells were not fixed.