

For Research Use Only

# FcZero-rAb® CoraLite® Plus 488 Anti-Human Endoglin/CD105 Rabbit Recombinant Antibody

Catalog Number: CL488-FcA98013-2



## Basic Information

**Catalog Number:**  
CL488-FcA98013-2

**Concentration:**  
100 tests, 5 ul/test

**Source:**  
Rabbit

**Isotype:**  
IgG

**Immunogen Catalog Number:**  
EG0587

**GenBank Accession Number:**  
BC014271

**GeneID (NCBI):**  
2022

**UNIPROT ID:**  
P17813

**Full Name:**  
endoglin

**Calculated MW:**  
71 kDa

**Purification Method:**  
Protein A purification

**CloneNo.:**  
241196D9

**Recommended Dilutions:**  
FC: 5 ul per 10<sup>6</sup> cells in a 100 µl suspension

**Excitation/Emission maxima wavelengths:**  
493 nm / 522 nm

## Applications

**Tested Applications:**  
FC

**Species Specificity:**  
human

**Positive Controls:**

FC : human PBMCs,

## Background Information

Endoglin (ENG, CD105) is a homodimeric cell membrane glycoprotein of 180 kDa, composed of disulphide-linked subunits of 90-95 kDa. Endoglin is a proliferation-associated and hypoxia-inducible protein mainly expressed on vascular endothelial cells. It acts as an accessory receptor for transforming growth factor beta (TGF-β) and is involved in vascular development and remodeling. The important role of Endoglin in angiogenesis and in tumor progression makes it an ideal target for antiangiogenic therapy and a good marker for tumor prognosis. (PMID: 1326540; 14528280; 21737653; 12773481)

## Storage

**Storage:**

Store at 2-8°C. Avoid exposure to light. Stable for one year after shipment.

**Storage Buffer:**

PBS with 0.09% sodium azide and 0.5% BSA, pH7.3

For technical support and original validation data for this product please contact:

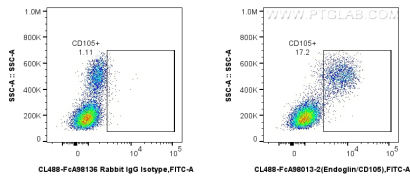
T: 4006900926

E: Proteintech-CN@ptglab.com

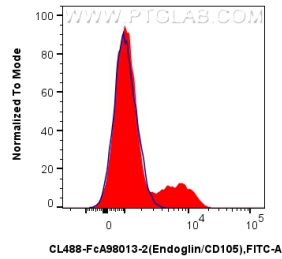
W: ptgcn.com

**This product is exclusively available under Proteintech Group brand and is not available to purchase from any other manufacturer.**

## Selected Validation Data



1x10<sup>6</sup> human PBMCs were surface stained with 5 ul CoraLite® Plus 488 Anti-Human Endoglin/CD105 Rabbit RecAb (CL488-FcA98013-2, Clone: 241196D9) or FcZero-rAb® CoraLite® Plus 488 Rabbit IgG Isotype Control Recombinant Antibody (CL488-FcA98136, Clone: 240953C9). Cells were not fixed.



1x10<sup>6</sup> human PBMCs were surface stained with 5 ul CoraLite® Plus 488 Anti-Human Endoglin/CD105 Rabbit RecAb (CL488-FcA98013-2, Clone: 241196D9) (red) or FcZero-rAb® CoraLite® Plus 488 Rabbit IgG Isotype Control Recombinant Antibody (CL488-FcA98136, Clone: 240953C9) (blue). Cells were not fixed.