

For Research Use Only

FcZero-rAb® CoraLite® Plus 488 Anti-Human LRP1 (5A6) Rabbit Recombinant Antibody

Catalog Number: CL488-FcA65594



Basic Information

Catalog Number:

CL488-FcA65594

Concentration:

100tests, 5 ul/test

Source:

Rabbit

Isotype:

IgG

GenBank Accession Number:

BC045107

GeneID (NCBI):

4035

UNIPROT ID:

Q07954

Full Name:

low density lipoprotein-related protein 1 (alpha-2-macroglobulin receptor)

Calculated MW:

505 kDa

Purification Method:

Protein A purification

CloneNo.:

5A6

Recommended Dilutions:

FC: 5 ul per 10⁶ cells in a 100 µl suspension

Excitation/Emission maxima wavelengths:

493 nm / 522 nm

Applications

Tested Applications:

FC

Species Specificity:

human

Positive Controls:

FC : U-87 MG cells,

Background Information

LRP1 (Prolow-density lipoprotein receptor-related protein 1), also known as A2MR, APOER and CD91, is a type I transmembrane protein that belongs to the LDLR family. LRP1 is synthesized as a transmembrane glycosylated precursor of 600 kDa, and is subsequently cleaved to generate a large 515-kDa N-terminal extracellular subunit and an 85-kDa C-terminal transmembrane subunit, which are noncovalently associated with one another (PMID: 2112085; 8546712). LRP1 is a multifunctional receptor involved in the clearance of a large number of diverse ligands and modulating various cellular processes. LRP1 is implicated in conditions such as atherosclerosis, cancer and neurodegenerative diseases (PMID: 28381441).

Storage

Storage:

Store at 2-8°C. Avoid exposure to light. Stable for one year after shipment.

Storage Buffer:

PBS with 0.09% sodium azide and 0.5% BSA, pH7.3

For technical support and original validation data for this product please contact:

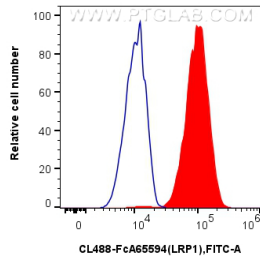
T: 4006900926

E: Proteintech-CN@ptglab.com

W: ptgcn.com

This product is exclusively available under Proteintech Group brand and is not available to purchase from any other manufacturer.

Selected Validation Data



1x10⁶ U-87 MG cells were surface stained with 5 ul CoraLite® Plus 488 Anti-Human LRP1 (5A6) Rabbit RecAb (CL488-FcA65594, Clone: 5A6) (red) or 5 ul Rabbit IgG Isotype Control RecAb (CL488-FcA98136, Clone: 240953C9) (blue). Cells were not fixed.