

For Research Use Only

FcZero-rAb® CoraLite® Plus 488 Anti-Human CD107b / LAMP2 (H4B4) Rabbit Recombinant Antibody



Catalog Number: CL488-FcA65566

Basic Information

Catalog Number:

CL488-FcA65566

Concentration:

100tests, 5 ul/test

Source:

Rabbit

Isotype:

IgG

GenBank Accession Number:

BC002965

GeneID (NCBI):

3920

ENSEMBL Gene ID:

ENSG00000005893

UNIPROT ID:

P13473

Full Name:

lysosomal-associated membrane protein 2

Calculated MW:

45 kDa

Purification Method:

Protein A purification

CloneNo.:

H4B4

Recommended Dilutions:

IF/ICC: 1:50-1:500

FC: 5 ul per 10⁶ cells in a 100 µl suspension

Excitation/Emission maxima

wavelengths:

493 nm / 522 nm

Applications

Tested Applications:

IF/ICC, FC

Species Specificity:

human

Positive Controls:

IF/ICC : HeLa cells,

FC : Jurkat cells,

Background Information

LAMP2 (CD107b) is a Lysosomal membrane glycoprotein. LAMP2 is extensively glycosylated with asparagine-linked oligosaccharides which protect it from intracellular proteolysis (PMID: 10521503). Although LAMP-2 is localized primarily in the endosome-lysosomal membrane of cells, it is also found on the plasma membrane under certain circumstances, e.g., after platelet activation, during granulocytic differentiation and activation, and in some tumor cells (PMID: 12221139). LAMP is involved in lysosomal stability and autophagy (PMID: 12221139). This glycoprotein provides selectins with carbohydrate ligands. LAMP2 may play a role in tumor cell metastasis (PMID 9426697).

Storage

Storage:

Store at 2-8°C. Avoid exposure to light. Stable for one year after shipment.

Storage Buffer:

PBS with 0.09% sodium azide and 0.5% BSA, pH7.3

For technical support and original validation data for this product please contact:

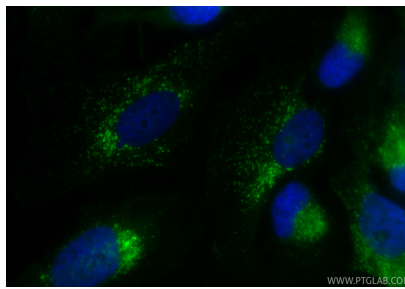
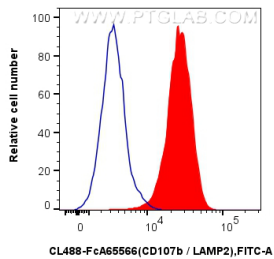
T: 4006900926

E: Proteintech-CN@ptglab.com

W: ptgcn.com

This product is exclusively available under Proteintech Group brand and is not available to purchase from any other manufacturer.

Selected Validation Data



1x10⁶ Jurkat cells were surface stained with 5 ul CoraLite® Plus 488 Anti-Human CD107b / LAMP2 (H4B4) Rabbit RecAb (CL488-FcA65566, Clone: H4B4) (red) or FcZero-rAb® CoraLite® Plus 488 Rabbit IgG Isotype Control Recombinant Antibody (CL488-FcA98136, Clone: 240953C9)(blue). Cells were fixed and permeabilized with Intracellular Flow Cytometry Fixation & Permeabilization Buffer Kit (PF00019).

Immunofluorescent analysis of (4% PFA) fixed HeLa cells using CoraLite® Plus 488 CD107b / LAMP2 antibody (CL488-FcA65566, Clone: H4B4) at dilution of 1:200.