

For Research Use Only

CoraLite® Plus 488 Mouse IgG2a, κ Isotype Control Recombinant Antibody

Catalog Number:CL488-98599



Basic Information

Catalog Number:

CL488-98599

Concentration:

100ug, 500 ug/ml

Source:

Mouse

Isotype:

IgG2a

GenBank Accession Number:

GeneID (NCBI):

Full Name:

Purification Method:

Protein A purification

CloneNo.:

252252A1

Recommended Dilutions:

FC: 0.25 ug per 10^6 cells in a 100 μ l suspension

Excitation/Emission maxima wavelengths:

493 nm / 522 nm

Applications

Tested Applications:

FC

Species Specificity:

n/a

Positive Controls:

FC : human PBMCs, rat splenocytes, THP-1 cells

Background Information

This product is an isotype control antibody, which is used to estimate the non-specific binding of target primary antibodies due to Fc receptor binding or other protein-protein interactions. An isotype control antibody should have the same immunoglobulin type and be used at the same concentration as the test antibody.

Storage

Storage:

Store at 2-8°C. Avoid exposure to light. Stable for one year after shipment.

Storage Buffer:

PBS with 0.09% sodium azide, pH7.3

For technical support and original validation data for this product please contact:

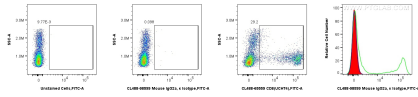
T: 4006900926

E: Proteintech-CN@ptglab.com

W: ptgcn.com

This product is exclusively available under Proteintech Group brand and is not available to purchase from any other manufacturer.

Selected Validation Data



1x10⁶ human PBMCs were surface stained with 0.25 ug CoraLite® Plus 488 Mouse IgG2a, κ Isotype Control RecAb (CL488-98599, Clone: 252252A1) (red in histogram), or 0.25 ug CoraLite® Plus 488 Anti-Human CD8 (UCHT4) Mouse IgG2a Recombinant Antibody (CL488-65559, Clone: UCHT4) (green in histogram), or unstained (blue in histogram). Cells were incubated with FC Receptor Block prior to staining. Cells were not fixed.