

For Research Use Only

CoraLite® Plus 488 Anti-Human CD206 Rabbit Recombinant Antibody

Catalog Number:CL488-98458-3



Basic Information

Catalog Number: CL488-98458-3	GenBank Accession Number: NM_002438.4	Purification Method: Protein A purification
Concentration: 100tests, 5 ul/test	GeneID (NCBI): 4360	CloneNo.: 250381C1
Source: Rabbit	UNIPROT ID: P22897-1	Recommended Dilutions: FC: 5 ul per 10 ⁶ cells in a 100 µl suspension
Isotype: IgG	Full Name: mannose receptor, C type 1	Excitation/Emission maxima wavelengths: 493 nm / 522 nm
Immunogen Catalog Number: EG2428	Calculated MW: 166 kDa	

Applications

Tested Applications: FC	Positive Controls: FC : GM-CSF, IL-4 and IL-10 treated human PBMCs,
Species Specificity: human	

Background Information

CD206, also named as MMR, CLEC13D and MRC1, is a type I membrane receptor that mediates the endocytosis of glycoproteins by macrophages. CD206 has been shown to bind high-mannose structures on the surface of potentially pathogenic viruses, bacteria, and fungi so that they can be neutralized by phagocytic engulfment. CD206 is a 170 kDa transmembrane protein which contains 5 domains: an amino-terminal cysteine-rich region, a fibronectin type II repeat, a series of eight tandem lectin-like carbohydrate recognition domains (responsible for the recognition of mannose and fucose), a transmembrane domain, and an intracellular carboxy-terminal tail. It is expressed on most tissue macrophages, in vitro derived dendritic cells, lymphatic and sinusoidal endothelia.

Storage

Storage:
Store at 2-8°C. Avoid exposure to light. Stable for one year after shipment.
Storage Buffer:
PBS with 0.09% sodium azide and 0.5% BSA, pH7.3

For technical support and original validation data for this product please contact:

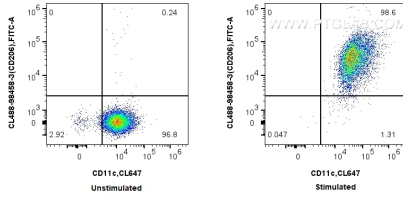
T: 4006900926

E: Proteintech-CN@ptglab.com

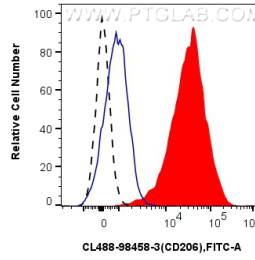
W: ptgcn.com

This product is exclusively available under Proteintech Group brand and is not available to purchase from any other manufacturer.

Selected Validation Data



1x10⁶ untreated or GM-CSF, IL-4 and IL-10 treated human PBMCs were surface stained with CoraLite® Plus 647 Anti-Human CD11c and 5 ul CoraLite® Plus 488 Anti-Human CD206 Rabbit RecAb (CL488-98458-3, Clone: 250381C1). Cells were incubated with FC Receptor Block prior to staining. Cells were not fixed.



1x10⁶ GM-CSF, IL-4 and IL-10 treated human PBMCs were surface stained with 5 ul CoraLite® Plus 488 Anti-Human CD206 Rabbit RecAb (CL488-98458-3, Clone: 250381C1) (red) or CoraLite® Plus 488 Rabbit IgG Isotype Control RecAb (CL488-98136, Clone: 240953C9) (blue). 1x10⁶ untreated human PBMCs were surface stained with 5 ul CoraLite® Plus 488 Anti-Human CD206 Rabbit RecAb (CL488-98458-3, Clone: 250381C1) (black, dashed). Cells were incubated with FC