

For Research Use Only

CoraLite® Plus 488 Anti-Human TGFBR2 Rabbit Recombinant Antibody

Catalog Number:CL488-98438



Basic Information

Catalog Number: CL488-98438	GenBank Accession Number: NM_003242.5	Purification Method: Protein A purification
Concentration: 100tests, 5 ul/test	GeneID (NCBI): 7048	CloneNo.: 250238A7
Source: Rabbit	UNIPROT ID: P37173-1	Recommended Dilutions: FC: 5 ul per 10 ⁶ cells in a 100 µl suspension
Isotype: IgG	Full Name: transforming growth factor, beta receptor II (70/80kDa)	Excitation/Emission maxima wavelengths: 493 nm / 522 nm
Immunogen Catalog Number: EG2943	Calculated MW: 65 kDa	

Applications

Tested Applications: FC	Positive Controls: FC : human PBMCs,
Species Specificity: human	

Background Information

TGF beta Receptor II (TGFBR2) is a member of the transforming growth factor- β (TGF- β) superfamily, which are critical regulators of cell proliferation and differentiation, developmental patterning and morphogenesis, and disease pathogenesis (PMID: 10974075). TGFBR2 is a serine/threonine kinase and the primary ligand-binding receptor. After binding of the ligand TGF- β 1, TGFBR2 forms a heterodimer complex with TGFBR1, causing conformational changes and signal propagation via canonical (SMAD-dependent) and non-canonical (SMAD-independent) routes. Upon translocation into the nucleus, activated SMAD complexes can interact with various transcription factors to control target gene expression (PMID: 31454892).

Storage

Storage:
Store at 2-8°C. Avoid exposure to light. Stable for one year after shipment.
Storage Buffer:
PBS with 0.09% sodium azide and 0.5% BSA, pH7.3

For technical support and original validation data for this product please contact:

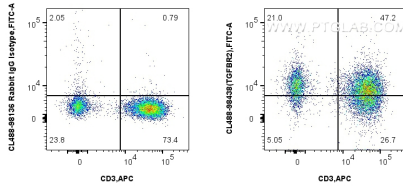
T: 4006900926

E: Proteintech-CN@ptglab.com

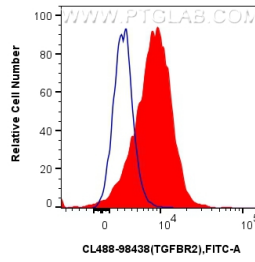
W: ptgcn.com

This product is exclusively available under Proteintech Group brand and is not available to purchase from any other manufacturer.

Selected Validation Data



1x10⁶ human PBMCs were surface stained with APC Anti-Human CD3, and 5 ul CoraLite® Plus 488 Anti-Human TGFBR2 Rabbit RecAb (CL488-98438, Clone: 250238A7) or CoraLite® Plus 488 Rabbit IgG Isotype Control Recombinant Antibody (CL488-98136, Clone: 240953C9). Cells were not fixed. Lymphocytes were gated.



1x10⁶ human PBMCs were surface stained with 5 ul CoraLite® Plus 488 Anti-Human TGFBR2 Rabbit RecAb (CL488-98438, Clone: 250238A7) (red) or CoraLite® Plus 488 Rabbit IgG Isotype Control Recombinant Antibody (CL488-98136, Clone: 240953C9) (blue). Cells were not fixed. Lymphocytes were gated.