

For Research Use Only

# CoraLite® Plus 488 Anti-Mouse Ly-6G Rabbit Recombinant Antibody

Catalog Number: CL488-98284



## Basic Information

Catalog Number:

CL488-98284

Concentration:

100ug, 500 ug/ml

Source:

Rabbit

Isotype:

IgG

Immunogen Catalog Number:

EG2609

GenBank Accession Number:

NM\_001310438.1

GeneID (NCBI):

546644

UNIPROT ID:

P35461

Full Name:

lymphocyte antigen 6 complex, locus G

Calculated MW:

14 kDa

Purification Method:

Protein A purification

CloneNo.:

242141B11

Recommended Dilutions:

FC: 0.25 ug per 10<sup>6</sup> cells in a 100 µl suspension

Excitation/Emission maxima wavelengths:

493 nm / 522 nm

## Applications

Tested Applications:

FC

Species Specificity:

mouse

Positive Controls:

FC : mouse bone marrow cells,

## Background Information

Ly-6G (lymphocyte antigen 6 complex, locus G), also known as Gr-1, is a 21-25 kDa, glycosylphosphatidylinositol-anchored protein expressed on myeloid lineage cells in mouse bone marrow (PMID: 8360469). The expression of Ly-6G increases on neutrophils as they differentiate from immature cells in the bone marrow to mature cells in the blood and spleen (PMID: 8890901).

## Storage

Storage:

Store at 2-8°C. Avoid exposure to light. Stable for one year after shipment.

Storage Buffer:

PBS with 0.09% sodium azide, pH7.3

For technical support and original validation data for this product please contact:

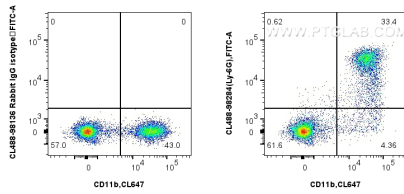
T: 4006900926

E: [Proteintech-CN@ptglab.com](mailto:Proteintech-CN@ptglab.com)

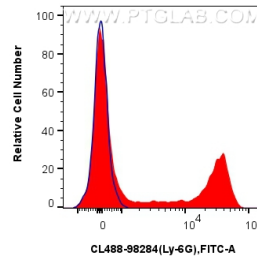
W: [ptgcn.com](http://ptgcn.com)

This product is exclusively available under Proteintech Group brand and is not available to purchase from any other manufacturer.

## Selected Validation Data



1x10<sup>6</sup> mouse bone marrow cells were surface stained with CoraLite® Plus 647 Anti-Mouse CD11b, and 0.25 ug CoraLite® Plus 488 Anti-Mouse Ly-6G Rabbit RecAb (CL488-98284, Clone: 242141B11) or CoraLite® Plus 488 Rabbit IgG Isotype Control RecAb (CL488-98136, Clone: 240953C9). Cells were not fixed.



1x10<sup>6</sup> mouse bone marrow cells were surface stained with 0.25 ug CoraLite® Plus 488 Anti-Mouse Ly-6G Rabbit RecAb (CL488-98284, Clone: 242141B11) (red) or CoraLite® Plus 488 Rabbit IgG Isotype Control RecAb (CL488-98136, Clone: 240953C9) (blue). Cells were not fixed.