

For Research Use Only

# CoraLite® Plus 488 Anti-Human IFN- $\gamma$ Rabbit Recombinant Antibody

Catalog Number: CL488-98187



## Basic Information

Catalog Number:

CL488-98187

Concentration:

100 tests, 5  $\mu$ l/test

Source:

Rabbit

Isotype:

IgG

Immunogen Catalog Number:

EG0004

GenBank Accession Number:

BC070256

GeneID (NCBI):

3458

ENSEMBL Gene ID:

ENSG00000111537

UNIPROT ID:

P01579

Full Name:

IFN  $\gamma$

Calculated MW:

166 aa, 19 kDa

Purification Method:

Protein A purification

CloneNo.:

241390B10

Excitation/Emission maxima wavelengths:

493 nm / 522 nm

## Applications

Tested Applications:

FC (Intra)

Species Specificity:

human

Positive Controls:

FC (Intra) : PMA, Ionomycin and Brefeldin A treated human PBMCs,

## Background Information

Interferon gamma (IFN  $\gamma$ ), is a type II interferon that provides immunity against bacterial, viral and protozoan infections. In its active form, IFN  $\gamma$  is a glycosylated, non-covalently linked homodimer of 29-32 kDa subunits. It is produced by a number of immune cell types including natural killer cells, natural killer T cells, and effector lymphocyte T cells following antigenic and inflammatory triggers. The IFN  $\gamma$  dimer binds to its cognate receptor which has two subunits: IFN- $\gamma$  R1 which is the ligand-binding chain ( $\alpha$  chain) and IFN- $\gamma$  R2, the signal-transducing chain ( $\beta$  chain). Binding to the receptor activates the JAK/STAT pathway which in turn activates IFN  $\gamma$  responsive genes. While IFN  $\gamma$  can inhibit viral replication, it also works as an immune-modulator and immune-stimulator by increasing surface expression of class I MHC proteins. (PMID: 19268625; 10688427)

## Storage

Storage:

Store at 2-8°C. Avoid exposure to light. Stable for one year after shipment.

Storage Buffer:

PBS with 0.09% sodium azide and 0.5% BSA, pH7.3

For technical support and original validation data for this product please contact:

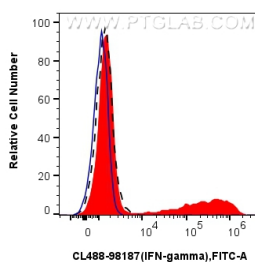
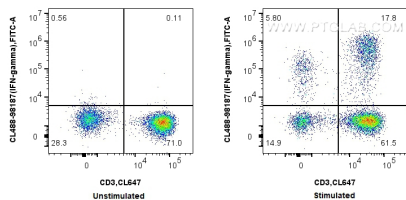
T: 4006900926

E: [Proteintech-CN@ptglab.com](mailto:Proteintech-CN@ptglab.com)

W: [ptgcn.com](http://ptgcn.com)

This product is exclusively available under Proteintech Group brand and is not available to purchase from any other manufacturer.

## Selected Validation Data



1x10<sup>6</sup> untreated or PMA, Ionomycin and Brefeldin A treated human PBMCs were intracellularly stained with 5 ul CoraLite® Plus 488 Anti-Human IFN-gamma Rabbit RecAb (CL488-98187, Clone:241390B10). Cells were co-stained with CoraLite® Plus 647 Anti-Human CD3 (OKT3) Mouse IgG2a Recombinant Antibody (CL647-65569, Clone: OKT3). Cells were fixed with 4% PFA and permeabilized with Flow Cytometry Perm Buffer (PF00011-C).

1x10<sup>6</sup> PMA, Ionomycin and Brefeldin A treated human PBMCs were intracellularly stained with 5 ul CoraLite® Plus 488 Anti-Human IFN-gamma Rabbit RecAb (CL488-98187, Clone: 241390B10) (red) or CoraLite® Plus 488 Rabbit IgG Isotype Control RecAb (CL488-98136, Clone: 240953C9)(blue). 1x10<sup>6</sup> untreated human PBMCs were intracellularly stained with 5 ul CoraLite® Plus 488 Anti-Human IFN-gamma Rabbit RecAb (CL488-98187, Clone: 241390B10)

