

For Research Use Only

CoraLite® Plus 488 Anti-Mouse CD45.2 Rabbit Recombinant Antibody

Catalog Number: CL488-98168



Basic Information

Catalog Number:

CL488-98168

Size:

100ug, 500 µg/ml

Source:

Rabbit

Isotype:

IgG

GenBank Accession Number:

GeneID (NCBI):

19264

Full Name:

protein tyrosine phosphatase,
receptor type, C

Purification Method:

Protein A purification

CloneNo.:

240922E12

Excitation/Emission maxima
wavelengths:

493 nm / 522 nm

Applications

Tested Applications:

FC

Species Specificity:

mouse

Background Information

CD45, also known as protein tyrosine phosphatase, receptor type C, is a type I transmembrane protein expressed on the surface of all haematopoietic cells with the exception of erythrocytes and platelets (PMID: 3489673; 28615666). CD45 is a pan-haematopoietic cell marker and has been shown to be essential for T- and B-cell activation and signalling (PMID: 9429890; 16378097). Allelic variants of mouse CD45, CD45.1 (Ly5.1) and CD45.2 (Ly5.1), have been established as a marker system to track haematopoietic cells following congenic mouse bone marrow transplants (PMID: 28615666). CD45.2 is the common form and is expressed by most of the established strains, while CD45.1 is found in only a few like the SJL mouse strain (PMID: 3489673).

Storage

Storage:

Store at 2-8°C. Avoid exposure to light. Stable for one year after shipment.

Storage Buffer:

PBS with 0.09% sodium azide.

For technical support and original validation data for this product please contact:

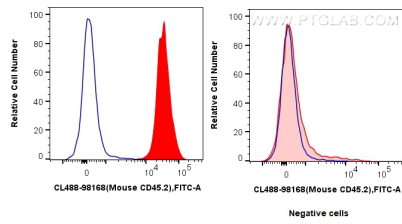
T: 4006900926

E: Proteintech-CN@ptglab.com

W: ptgcn.com

This product is exclusively available under Proteintech Group brand and is not available to purchase from any other manufacturer.

Selected Validation Data



1x10⁶ C57BL/6 mouse splenocytes (left) or SJL mouse splenocytes (right) were surface stained with 0.25 ug CoraLite® Plus 488 Anti-Mouse CD45.2 Rabbit Recombinant Antibody (CL488-98168, Clone:240922E12)(red) or CoraLite® Plus 488 Rabbit IgG Isotype Control Recombinant Antibody (CL488-98136, Clone: 240953C9) (blue). Cells were not fixed.