

For Research Use Only

# CoraLite® Plus 488 Anti-Human CD90 Rabbit Recombinant Antibody

Catalog Number: CL488-98126



## Basic Information

Catalog Number:

CL488-98126

Concentration:

100 tests, 5 µl/test

Source:

Rabbit

Isotype:

IgG

GenBank Accession Number:

BC065559

GeneID (NCBI):

7070

UNIPROT ID:

P04216

Full Name:

Thy-1 cell surface antigen

Calculated MW:

161 aa, 18 kDa

Purification Method:

Protein A purification

CloneNo.:

241290B2

Excitation/Emission maxima wavelengths:

493 nm / 522 nm

## Applications

Tested Applications:

FC

Species Specificity:

human

## Background Information

CD90, also known as THY1, is a 25-35 kD protein that is expressed on 1-4% of human fetal liver cells, cord blood cells, and bone marrow cells. CD90 is one of the essential surface molecules expressed on human MSC from bone marrow and other sources. Activation of Thy-1 has been reported to promote T cell activation. It also affects numerous nonimmunologic biological processes, including cellular adhesion, neurite outgrowth, tumor growth, migration, and cell death.

## Storage

Storage:

Store at 2-8°C. Avoid exposure to light. Stable for one year after shipment.

Storage Buffer:

PBS with 0.09% sodium azide and 0.5% BSA.

For technical support and original validation data for this product please contact:

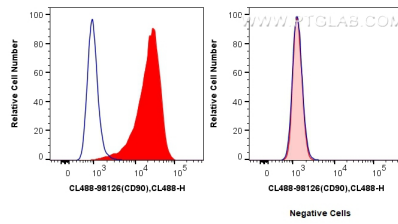
T: 4006900926

E: [Proteintech-CN@ptglab.com](mailto:Proteintech-CN@ptglab.com)

W: [ptgcn.com](http://ptgcn.com)

This product is exclusively available under Proteintech Group brand and is not available to purchase from any other manufacturer.

## Selected Validation Data



1x10<sup>6</sup> Hel 92.1.7 cells (left) or K562 cells (right) were surface stained with 5 ul CoraLite® Plus 488 Anti-Human CD90 Rabbit Recombinant Antibody (CL488-98126, Clone: 241290B2) (red) or CoraLite® Plus 488 Rabbit IgG Isotype Control Recombinant Antibody (CL488-98136, Clone: 240953C9) (blue). Cells were not fixed.