

For Research Use Only

# CoraLite® Plus 488-conjugated DSG2 Recombinant monoclonal antibody

Catalog Number:CL488-87426



## Basic Information

<b>Catalog Number:</b> CL488-87426	<b>GenBank Accession Number:</b> NM_001943.4	<b>Purification Method:</b> Protein A purification
<b>Source:</b> Rabbit	<b>GeneID (NCBI):</b> 1829	<b>CloneNo.:</b> 251405G8
<b>Isotype:</b> IgG	<b>UNIPROT ID:</b> Q14126	<b>Recommended Dilutions:</b> IF/ICC: 1:50-1:500
<b>Immunogen Catalog Number:</b> EG6509	<b>Full Name:</b> desmoglein 2	<b>Excitation/Emission maxima wavelengths:</b> 493 nm / 522 nm
	<b>Calculated MW:</b> 122 kDa	
	<b>Observed MW:</b> 150 kDa	

## Applications

<b>Tested Applications:</b> IF/ICC	<b>Positive Controls:</b> IF/ICC : MCF-7 cells, A431 cells
<b>Species Specificity:</b> human	

## Background Information

Desmosomes are cell-cell junctions between epithelial, myocardial, and certain other cell types. Desmosomal cadherins, consisting of four desmogleins (DSG1-4) and three desmocollins (DSC1-3) in humans, mediate adhesion through calcium-dependent homophilic/heterophilic interactions. DSG2 is a single-pass transmembrane glycoprotein that is widely expressed in epithelial and non-epithelial tissues, such as the intestine, epidermis, testis, and heart (PMID:21715983). Defects in DSG2 are the cause of familial arrhythmogenic right ventricular dysplasia type 10 (ARVD10), and genetic variations in DSG2 are the cause of susceptibility to cardiomyopathy dilated type 1BB (CMD1BB).

## Storage

**Storage:**  
Store at -20°C. Avoid exposure to light. Stable for one year after shipment.  
**Storage Buffer:**  
PBS with 50% glycerol, 0.05% Proclin300, 0.5% BSA, pH7.3  
**Aliquoting is unnecessary for -20°C storage**

For technical support and original validation data for this product please contact:

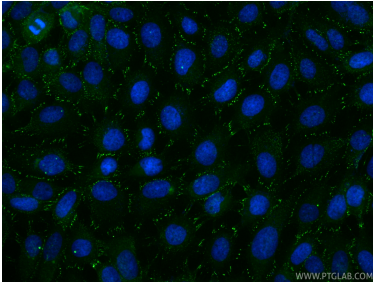
T: 4006900926

E: [Proteintech-CN@ptglab.com](mailto:Proteintech-CN@ptglab.com)

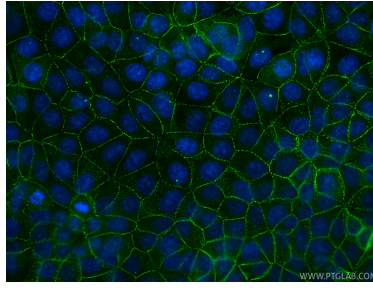
W: [ptgcn.com](http://ptgcn.com)

**This product is exclusively available under Proteintech Group brand and is not available to purchase from any other manufacturer.**

## Selected Validation Data



Immunofluorescent analysis of (-20°C Methanol) fixed A431 cells using CoraLite® Plus 488 DSG2 antibody (CL488-87426, Clone: 251405G8) at dilution of 1:200.



Immunofluorescent analysis of (-20°C Methanol) fixed MCF-7 cells using CoraLite® Plus 488 DSG2 antibody (CL488-87426, Clone: 251405G8) at dilution of 1:200.