

For Research Use Only

# CoraLite® Plus 488-conjugated ALCAM Recombinant monoclonal antibody

Catalog Number:CL488-86811



## Basic Information

Catalog Number:

CL488-86811

Source:

Rabbit

Isotype:

IgG

Immunogen Catalog Number:

EG5038

GenBank Accession Number:

BC137097

GeneID (NCBI):

214

UNIPROT ID:

Q13740

Full Name:

activated leukocyte cell adhesion molecule

Calculated MW:

583 aa, 65 kDa

Observed MW:

100 kDa

Purification Method:

Protein A purification

CloneNo.:

251789C7

Recommended Dilutions:

IF/ICC: 1:50-1:500

Excitation/Emission maxima wavelengths:

493 nm / 522 nm

## Applications

Tested Applications:

IF/ICC

Species Specificity:

human

Positive Controls:

IF/ICC : A549 cells,

## Background Information

Activated leukocyte cell adhesion molecule (ALCAM, also known as CD166) is a cell adhesion molecule that belongs to the immunoglobulin superfamily. It is involved in cell-cell adhesion through homophilic and heterophilic (to CD6) interactions. ALCAM is widely expressed in a variety of normal tissues. Altered ALCAM expression has been associated with the differentiation state and progression in some neoplasms including melanoma, prostate, colorectal, and breast cancers (PMID: 20461761; 18172759).

## Storage

Storage:

Store at -20°C. Avoid exposure to light. Stable for one year after shipment.

Storage Buffer:

PBS with 50% glycerol, 0.05% Proclin300, 0.5% BSA, pH7.3

Aliquoting is unnecessary for -20°C storage

For technical support and original validation data for this product please contact:

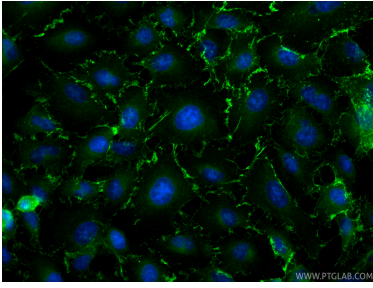
T: 4006900926

E: [Proteintech-CN@ptglab.com](mailto:Proteintech-CN@ptglab.com)

W: [ptgcn.com](http://ptgcn.com)

This product is exclusively available under Proteintech Group brand and is not available to purchase from any other manufacturer.

## Selected Validation Data



Immunofluorescent analysis of (-20°C Methanol) fixed A549 cells using CoraLite® Plus 488 ALCAM antibody (CL488-86811, Clone: 251789C7) at dilution of 1:200.