

For Research Use Only

# CoraLite® Plus 488-conjugated Podoplanin Recombinant monoclonal antibody

Catalog Number: CL488-86750-2



## Basic Information

<b>Catalog Number:</b> CL488-86750-2	<b>GenBank Accession Number:</b> BC014668	<b>Purification Method:</b> Protein A purification
<b>Source:</b> Rabbit	<b>GeneID (NCBI):</b> 10630	<b>CloneNo.:</b> 251406B11
<b>Isotype:</b> IgG	<b>UNIPROT ID:</b> Q86YL7-1	<b>Recommended Dilutions:</b> IF-P: 1:50-1:500
<b>Immunogen Catalog Number:</b> EG5024	<b>Full Name:</b> podoplanin	<b>Excitation/Emission maxima wavelengths:</b> 493 nm / 522 nm
	<b>Observed MW:</b> 36-43 kDa	

## Applications

<b>Tested Applications:</b> IF-P	<b>Positive Controls:</b> IF-P : mouse kidney tissue,
<b>Species Specificity:</b> human	

## Background Information

Podoplanin was identified as a 43 kDa glycoprotein found in the cell membranes of glomerular epithelial cells (podocyte) (PMID: 9327748). It is a lymphatic marker because the expression of podoplanin has been detected in lymphatic but not blood vascular endothelium, and is useful as the marker of tumor-associated Lymphangiogenesis. Podoplanin has a function in developing testis, most likely at the level of cell-cell interactions among pre-meiotic germ cells and immature Sertoli cells. It may be involved in cell migration and/or actin cytoskeleton organization. When expressed in keratinocytes, PDPN induces changes in cell morphology with transfected cells showing an elongated shape, numerous membrane protrusions, major reorganization of the actin cytoskeleton, increased motility and decreased cell adhesion. It is required for normal lung cell proliferation and alveolus formation at birth. PDPN induces platelet aggregation. It does not have any effect on folic acid or amino acid transport and does not function as a water channel or as a regulator of aquaporin-type water channels.

## Storage

**Storage:**  
Store at -20°C. Avoid exposure to light. Stable for one year after shipment.  
**Storage Buffer:**  
PBS with 50% glycerol, 0.05% Proclin300, 0.5% BSA, pH7.3  
**Aliquoting is unnecessary for -20°C storage**

For technical support and original validation data for this product please contact:

T: 4006900926

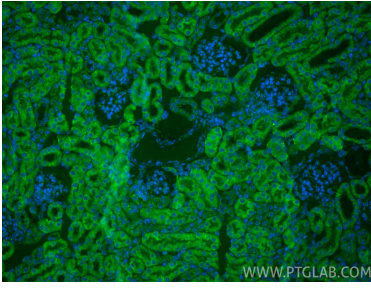
E: [Proteintech-CN@ptglab.com](mailto:Proteintech-CN@ptglab.com)

W: [ptgcn.com](http://ptgcn.com)

**This product is exclusively available under Proteintech Group brand and is not available to purchase from any other manufacturer.**

---

## Selected Validation Data



Immunofluorescent analysis of (4% PFA) fixed paraffin-embedded mouse kidney tissue using CoraLite® Plus 488 Podoplanin antibody (CL488-86750-2, Clone: 251406B11) at dilution of 1:200. Heat mediated antigen retrieval with Tris-EDTA buffer (pH 9.0).