

For Research Use Only

# CoraLite® Plus 488-conjugated SUPV3L1 Recombinant monoclonal antibody

Catalog Number: CL488-86706



## Basic Information

Catalog Number:

CL488-86706

Source:

Rabbit

Isotype:

IgG

Immunogen Catalog Number:

AG3542

GenBank Accession Number:

BC036112

GeneID (NCBI):

6832

UNIPROT ID:

Q8IYB8

Full Name:

suppressor of var1, 3-like 1 (S. cerevisiae)

Calculated MW:

786 aa, 88 kDa

Observed MW:

70-80 kDa

Purification Method:

Protein A purification

CloneNo.:

250855G8

Recommended Dilutions:

IF/ICC: 1:50-1:500

Excitation/Emission maxima  
wavelengths:

493 nm / 522 nm

## Applications

Tested Applications:

IF/ICC

Species Specificity:

human, mouse, rat

Positive Controls:

IF/ICC : HeLa cells,

## Background Information

SUPV3L1 is a major helicase player in mitochondrial RNA metabolism. It is involved in the degradation of non-coding mitochondrial transcripts (MT-ncRNA) and tRNA-like molecules (PMID: 29967381).

## Storage

Storage:

Store at -20°C. Avoid exposure to light. Stable for one year after shipment.

Storage Buffer:

PBS with 50% glycerol, 0.05% Proclin300, 0.5% BSA, pH7.3

Aliquoting is unnecessary for -20°C storage

For technical support and original validation data for this product please contact:

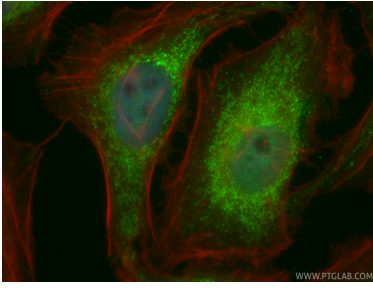
T: 4006900926

E: [Proteintech-CN@ptglab.com](mailto:Proteintech-CN@ptglab.com)

W: [ptgcn.com](http://ptgcn.com)

**This product is exclusively available under Proteintech Group brand and is not available to purchase from any other manufacturer.**

## Selected Validation Data



Immunofluorescent analysis of (4% PFA) fixed HeLa cells using CoraLite® Plus 488 SUPV3L1 antibody (CL488-86706, Clone: 250855G8) at dilution of 1:200, CL594-phalloidin (red).