

For Research Use Only

CoraLite® Plus 488-conjugated NUP153 Recombinant monoclonal antibody

Catalog Number: **CL488-86622**



Basic Information

Catalog Number: CL488-86622	GenBank Accession Number: BC052965	Purification Method: Protein A purification
Source: Rabbit	GeneID (NCBI): 9972	CloneNo.: 251519G11
Isotype: IgG	UNIPROT ID: P49790	Recommended Dilutions: IF/ICC: 1:50-1:500
Immunogen Catalog Number: AG5519	Full Name: nucleoporin 153kDa	Excitation/Emission maxima wavelengths: 493 nm / 522 nm
	Calculated MW: 154 kDa	
	Observed MW: 160-170 kDa	

Applications

Tested Applications: IF/ICC	Positive Controls: IF/ICC : HepG2 cells, HeLa cells
Species Specificity: human, mouse	

Background Information

NUP153 is an FG-repeat containing NUP, contains a high-affinity site for importin- β , localizes on the nucleoplasmic face of the nuclear pore and is required for assembly of the nuclear basket and import of a subset of nuclear proteins [PMID:18845677]. NUP153 also facilitates nuclear export of mRNA and ribonucleoprotein particles and may have additional functions within the nucleus [PMID:16195343]. The 53BP1-NUP153/importin- β pathway as an important aspect of the DDR network add to an emerging evidence of subcellular trafficking as an integral part of genome surveillance [PMID:22075984].

Storage

Storage:
Store at -20°C. Avoid exposure to light. Stable for one year after shipment.
Storage Buffer:
PBS with 50% glycerol, 0.05% Proclin300, 0.5% BSA, pH7.3
Aliquoting is unnecessary for -20°C storage

For technical support and original validation data for this product please contact:

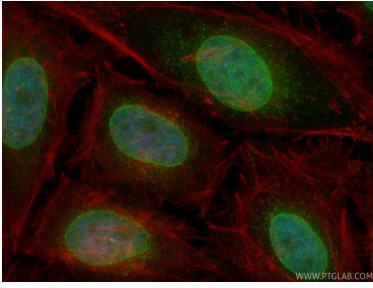
T: 4006900926

E: Proteintech-CN@ptglab.com

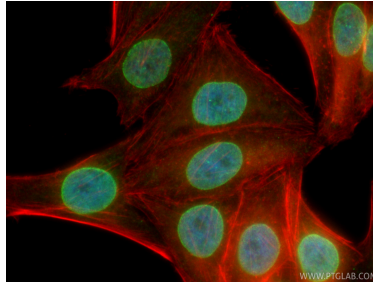
W: ptgcn.com

This product is exclusively available under Proteintech Group brand and is not available to purchase from any other manufacturer.

Selected Validation Data



Immunofluorescent analysis of (4% PFA) fixed HeLa cells using CoraLite® Plus 488 NUP153 antibody (CL488-86622, Clone: 251519G11) at dilution of 1:200, CL594-phalloidin (red).



Immunofluorescent analysis of (4% PFA) fixed HepG2 cells using CoraLite® Plus 488 NUP153 antibody (CL488-86622, Clone: 251519G11) at dilution of 1:200, CL594-phalloidin (red).