

For Research Use Only

CoraLite® Plus 488-conjugated GSPT2 Recombinant monoclonal antibody

Catalog Number: CL488-86508-3



Basic Information

Catalog Number:

CL488-86508-3

Source:

Rabbit

Isotype:

IgG

Immunogen Catalog Number:

AG3641

GenBank Accession Number:

BC036077

GeneID (NCBI):

23708

UNIPROT ID:

Q8IYD1

Full Name:

G1 to S phase transition 2

Calculated MW:

628 aa, 69 kDa

Observed MW:

69-75 kDa

Purification Method:

Protein A purification

CloneNo.:

251224C9

Recommended Dilutions:

IF/ICC: 1:50-1:500

Excitation/Emission maxima
wavelengths:

493 nm / 522 nm

Applications

Tested Applications:

IF/ICC

Species Specificity:

human, mouse, rat

Positive Controls:

IF/ICC : MCF-7 cells,

Background Information

GSPT2, also named as eukaryotic peptide chain release factor GTP-binding subunit ERF3B or G1 to S phase transition protein 2 homolog, is a 628 amino acid protein, which belongs to the GTP-binding elongation factor family ERF3 subfamily. GSPT2 localizes in the cytoplasm and is highly expressed in IUCR stage II colorectal cancer (CRC). GSPT2 is involved in translation termination in response to the termination codons UAA, UAG, and UGA and may play a role as a potent stimulator of the release factor activity of ETF1. It may play a role in cell cycle progression.

Storage

Storage:

Store at -20°C. Avoid exposure to light. Stable for one year after shipment.

Storage Buffer:

PBS with 50% glycerol, 0.05% Proclin300, 0.5% BSA, pH7.3

Aliquoting is unnecessary for -20°C storage

For technical support and original validation data for this product please contact:

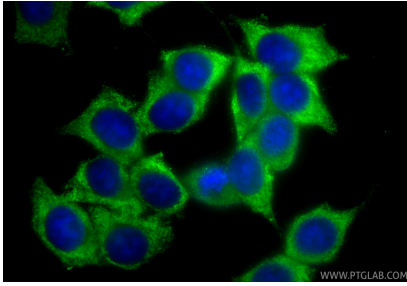
T: 4006900926

E: Proteintech-CN@ptglab.com

W: ptgcn.com

This product is exclusively available under Proteintech Group brand and is not available to purchase from any other manufacturer.

Selected Validation Data



Immunofluorescent analysis of (-20°C Methanol) fixed MCF-7 cells using CoraLite® Plus 488 GSPT2 antibody (CL488-86508-3, Clone: 251224C9) at dilution of 1:200.