

# CoraLite® Plus 488-conjugated CD146/MCAM Recombinant monoclonal antibody

Catalog Number: **CL488-86492**

## Basic Information

Catalog Number: CL488-86492	GenBank Accession Number: NM_006500.2	Purification Method: Protein A purification
Source: Rabbit	GeneID (NCBI): 4162	CloneNo.: 250530811
Isotype: IgG	UNIPROT ID: P43121-1	Recommended Dilutions: IF/ICC: 1:50-1:500
Immunogen Catalog Number: EG2938	Full Name: melanoma cell adhesion molecule	Excitation/Emission maxima wavelengths: 493 nm / 522 nm
	Calculated MW: 72 kDa	
	Observed MW: 120 kDa	

## Applications

Tested Applications: IF/ICC	Positive Controls: IF/ICC : HUVEC cells,
Species Specificity: human	

## Background Information

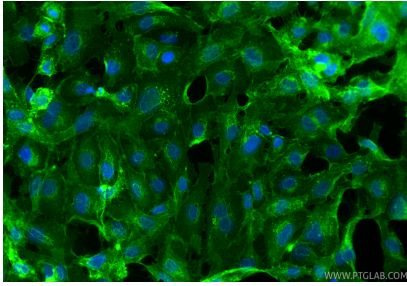
CD146, also known as melanoma cell adhesion molecule (MCAM) or MUC18, originally identified as a biomarker of melanoma progression, is a transmembrane glycoprotein of 113-130 kDa, belonging to the immunoglobulin (Ig) superfamily (PMID: 8378324; 25993332). Structurally, it consists of five Ig domains, a transmembrane domain, and a cytoplasmic region. In normal adult tissue, CD146 is primarily expressed by vascular endothelium and smooth muscle. CD146 is a key cell adhesion protein in vascular endothelial cell activity and angiogenesis, and has been used as marker of circulating endothelium cells (CECs) (PMID: 19356677). In addition to the membrane-anchored form of CD146, a soluble form of CD146 (sCD146, 105 kDa) has also been found in human plasma and in the supernatant of cultured human endothelial cells (PMID: 9462829; 19229070; 16374253; 14597988).

## Storage

**Storage:**  
Store at -20°C. Avoid exposure to light. Stable for one year after shipment.  
**Storage Buffer:**  
PBS with 50% glycerol, 0.05% Proclin300, 0.5% BSA, pH7.3  
**Aliquoting is unnecessary for -20°C storage**

---

## Selected Validation Data



Immunofluorescent analysis of (4% PFA) fixed HUVEC cells using CoraLite® Plus 488 CD146/MCAM antibody (CL488-86492, Clone: 250530B11) at dilution of 1:200.