

For Research Use Only

CoraLite® Plus 488-conjugated PSMB6 Recombinant monoclonal antibody

Catalog Number: CL488-86491



Basic Information

Catalog Number:

CL488-86491

Source:

Rabbit

Isotype:

IgG

Immunogen Catalog Number:

AG2296

GenBank Accession Number:

BC000835

GeneID (NCBI):

5694

UNIPROT ID:

P28072

Full Name:

proteasome (prosome, macropain)
subunit, beta type, 6

Calculated MW:

239 aa, 25 kDa

Observed MW:

25 kDa

Purification Method:

Protein A purification

CloneNo.:

251232G5

Recommended Dilutions:

IF/ICC: 1:50-1:500

Excitation/Emission maxima
wavelengths:

493 nm / 522 nm

Applications

Tested Applications:

IF/ICC

Species Specificity:

human, mouse

Positive Controls:

IF/ICC : HeLa cells,

Background Information

PSMB6 (Proteasome subunit beta type-6) is also named as LMPY, Y and belongs to the peptidase T1B family. The proteasome is a multicatalytic proteinase complex which is characterized by its ability to cleave peptides with Arg, Phe, Tyr, Leu, and Glu adjacent to the leaving group at neutral or slightly basic pH. It may also catalyze basal processing of intracellular antigens. It can be up-regulated in anaplastic thyroid cancer cell lines and down-regulated by IFN-γ (at protein level) (PMID:8066462;15613457).

Storage

Storage:

Store at -20°C. Avoid exposure to light. Stable for one year after shipment.

Storage Buffer:

PBS with 50% glycerol, 0.05% Proclin300, 0.5% BSA, pH7.3

Aliquoting is unnecessary for -20°C storage

For technical support and original validation data for this product please contact:

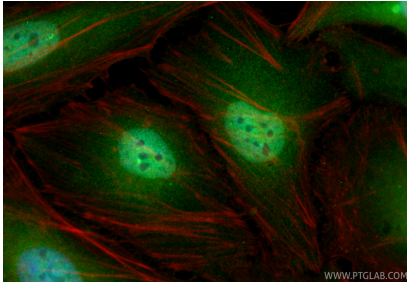
T: 4006900926

E: Proteintech-CN@ptglab.com

W: ptgcn.com

This product is exclusively available under Proteintech Group brand and is not available to purchase from any other manufacturer.

Selected Validation Data



Immunofluorescent analysis of (4% PFA) fixed HeLa cells using Coralite® Plus 488 PSMB6 antibody (CL488-86491, Clone: 251232G5) at dilution of 1:200, CL594-phalloidin (red).