

For Research Use Only

CoraLite® Plus 488-conjugated DHRS2 Recombinant monoclonal antibody

Catalog Number: CL488-86309-2



Basic Information

Catalog Number:

CL488-86309-2

Source:

Rabbit

Isotype:

IgG

Immunogen Catalog Number:

AG8508

GenBank Accession Number:

BC007339

GeneID (NCBI):

10202

UNIPROT ID:

Q13268

Full Name:

dehydrogenase/reductase (SDR family) member 2

Calculated MW:

300 aa, 32 kDa

Observed MW:

27-30 kDa

Purification Method:

Protein A purification

CloneNo.:

250977F7

Recommended Dilutions:

IF/ICC: 1:50-1:500

Excitation/Emission maxima wavelengths:

493 nm / 522 nm

Applications

Tested Applications:

IF/ICC

Species Specificity:

human

Positive Controls:

IF/ICC : U2OS cells,

Background Information

DHRS2(Dehydrogenase/reductase SDR family member 2) is also named as dicarbonyl reductase HEP27, Protein D and belongs to the short-chain dehydrogenases/reductases (SDR) family. It displays NADPH-dependent dicarbonyl reductase activity in vitro with 3,4-Hexanedione, 2,3-Heptanedione and 1-Phenyl-1,2-propanedione as substrates and there is no reductase activity displayed in vitro with steroids, retinoids and sugars as substrates. This protein also may inhibit cell replication. It has 2 isoforms produced by alternative splicing with the molecular weight of 27 kDa and 29 kDa.

Storage

Storage:

Store at -20°C. Avoid exposure to light. Stable for one year after shipment.

Storage Buffer:

PBS with 50% glycerol, 0.05% Proclin300, 0.5% BSA, pH7.3

Aliquoting is unnecessary for -20°C storage

For technical support and original validation data for this product please contact:

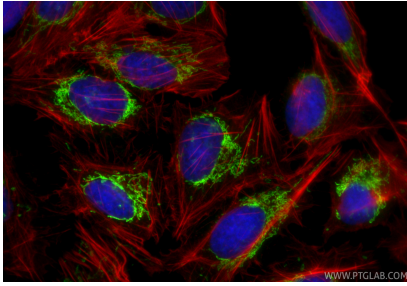
T: 4006900926

E: Proteintech-CN@ptglab.com

W: ptgcn.com

This product is exclusively available under Proteintech Group brand and is not available to purchase from any other manufacturer.

Selected Validation Data



Immunofluorescent analysis of (4% PFA) fixed U2OS cells using CoraLite® Plus 488 DHR52 antibody (CL488-86309-2, Clone: 250977F7) at dilution of 1:200, CL594-phalloidin (red).