

For Research Use Only

CoraLite® Plus 488-conjugated RBM26 Recombinant monoclonal antibody

Catalog Number: **CL488-86302**



Basic Information

Catalog Number:

CL488-86302

Source:

Rabbit

Isotype:

IgG

Immunogen Catalog Number:

AG10398

GenBank Accession Number:

BC000791

GeneID (NCBI):

64062

UNIPROT ID:

Q5T8P6

Full Name:

RNA binding motif protein 26

Calculated MW:

983 aa, 111 kDa

Observed MW:

130-140 kDa

Purification Method:

Protein A purification

CloneNo.:

250871F5

Recommended Dilutions:

IF/ICC: 1:50-1:500

Excitation/Emission maxima
wavelengths:

493 nm / 522 nm

Applications

Tested Applications:

IF/ICC

Species Specificity:

human, mouse, rat

Positive Controls:

IF/ICC : HeLa cells,

Background Information

Storage

Storage:

Store at -20°C. Avoid exposure to light. Stable for one year after shipment.

Storage Buffer:

PBS with 50% glycerol, 0.05% Proclin300, 0.5% BSA, pH7.3

Aliquoting is unnecessary for -20°C storage

For technical support and original validation data for this product please contact:

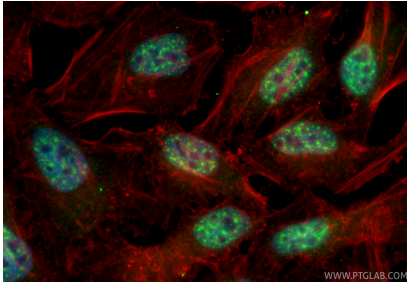
T: 4006900926

E: Proteintech-CN@ptglab.com

W: ptgcn.com

This product is exclusively available under Proteintech Group brand and is not available to purchase from any other manufacturer.

Selected Validation Data



Immunofluorescent analysis of (4% PFA) fixed HeLa cells using CoraLite® Plus 488 RBM26 antibody (CL488-86302, Clone: 250871F5) at dilution of 1:200, CL594-phalloidin (red).