

For Research Use Only

# CoraLite® Plus 488-conjugated CD4 Recombinant monoclonal antibody

Catalog Number:CL488-86300-3



## Basic Information

Catalog Number:

CL488-86300-3

Source:

Rabbit

Isotype:

IgG

Immunogen Catalog Number:

EG3847

GenBank Accession Number:

NM\_013488

GeneID (NCBI):

12504

UNIPROT ID:

P06332

Full Name:

CD4 antigen

Calculated MW:

51 kDa

Observed MW:

55 kDa

Purification Method:

Protein A purification

CloneNo.:

250263G12

Recommended Dilutions:

IF-P: 1:50-1:500

Excitation/Emission maxima  
wavelengths:

493 nm / 522 nm

## Applications

Tested Applications:

IF-P

Species Specificity:

mouse

Positive Controls:

IF-P: mouse spleen tissue,

## Background Information

CD4 is a 55-kDa transmembrane glycoprotein expressed on T helper cells, the majority of thymocytes, monocytes, macrophages, and dendritic cells (PMID: 9304802; 12213222). CD4 is an accessory protein for MHC class-II antigen/T-cell receptor interaction. It plays an important role in T helper cell development and activation (PMID: 9539765; 3112582). CD4 serves as a receptor for the human immunodeficiency virus (HIV) (PMID: 9304802).

## Storage

Storage:

Store at -20°C. Avoid exposure to light. Stable for one year after shipment.

Storage Buffer:

PBS with 50% glycerol, 0.05% Proclin300, 0.5% BSA, pH7.3

Aliquoting is unnecessary for -20°C storage

For technical support and original validation data for this product please contact:

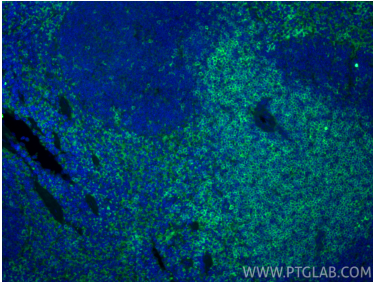
T: 4006900926

E: [Proteintech-CN@ptglab.com](mailto:Proteintech-CN@ptglab.com)

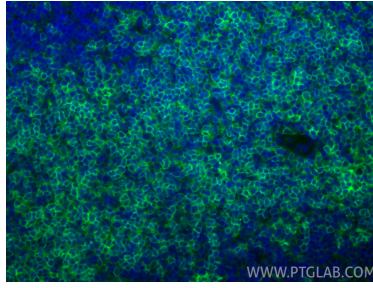
W: [ptgcn.com](http://ptgcn.com)

This product is exclusively available under Proteintech Group brand and is not available to purchase from any other manufacturer.

## Selected Validation Data



Immunofluorescent analysis of (4% PFA) fixed paraffin-embedded mouse spleen tissue using CoraLite® Plus 488 CD4 antibody (CL488-86300-3, Clone: 250263G12) at dilution of 1:200. Heat mediated antigen retrieval with Tris-EDTA buffer (pH 9.0).



Immunofluorescent analysis of (4% PFA) fixed paraffin-embedded mouse spleen tissue using CoraLite® Plus 488 CD4 antibody (CL488-86300-3, Clone: 250263G12) at dilution of 1:200. Heat mediated antigen retrieval with Tris-EDTA buffer (pH 9.0).