

For Research Use Only



CoraLite® Plus 488-conjugated CDK12/CRKRS Recombinant monoclonal antibody

Catalog Number: **CL488-86296-3**

Basic Information

Catalog Number: CL488-86296-3	GenBank Accession Number: BC150265	Purification Method: Protein A purification
Source: Rabbit	GeneID (NCBI): 51755	CloneNo.: 250880E5
Isotype: IgG	UNIPROT ID: Q9NYV4	Recommended Dilutions: IF/ICC: 1:50-1:500
Immunogen Catalog Number: AG25312	Full Name: Cdc2-related kinase, arginine/serine-rich	Excitation/Emission maxima wavelengths: 493 nm / 522 nm
	Calculated MW: 1490 aa, 164 kDa	
	Observed MW: 180-200 kDa	

Applications

Tested Applications: IF/ICC	Positive Controls: IF/ICC : NIH/3T3 cells, A431 cells
Species Specificity: human, mouse	

Background Information

CRKRS (Cdc2-related kinase, Arg/Ser), also named as cyclin-dependent kinase 12 (CKD12), belongs to CDC2/CDKX subfamily. CDK12 can form a heterodimeric complex with its activating partner, cyclin K, to regulate important cellular physiological processes that include transcriptional regulation, regulation of DNA damage repair genes such as BRCA1 and ATM, suppression of intronic polyadenylation, and susceptibility to PARP inhibitors (PMID: 30487607, 24240700, 31694772). CDK12 has 3 isoforms with the calculated molecular mass of 164/163/141 kDa, and the apparent molecular mass of 180-200 kDa due to some modifications (PMID 11683387, 22988298).

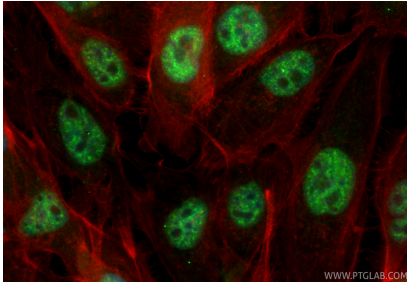
Storage

Storage:
Store at -20°C. Avoid exposure to light. Stable for one year after shipment.
Storage Buffer:
PBS with 50% glycerol, 0.05% Proclin300, 0.5% BSA, pH7.3
Aliquoting is unnecessary for -20°C storage

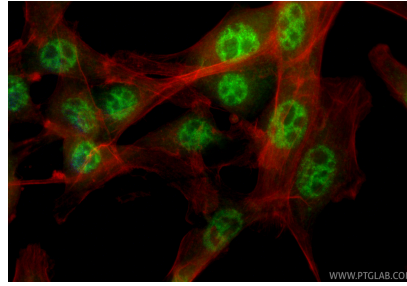
For technical support and original validation data for this product please contact:
T: 4006900926 E: Proteintech-CN@ptglab.com W: ptgcn.com

This product is exclusively available under Proteintech Group brand and is not available to purchase from any other manufacturer.

Selected Validation Data



Immunofluorescent analysis of (4% PFA) fixed A431 cells using CoraLite® Plus 488 CDK12/CRKRS antibody (CL488-86296-3, Clone: 250880E5) at dilution of 1:200, CL594-phalloidin (red).



Immunofluorescent analysis of (4% PFA) fixed NIH/3T3 cells using CoraLite® Plus 488 CDK12/CRKRS antibody (CL488-86296-3, Clone: 250880E5) at dilution of 1:200, CL594-phalloidin (red).