

For Research Use Only

CoraLite® Plus 488-conjugated C19orf59 Recombinant monoclonal antibody

Catalog Number: **CL488-86266**



Basic Information

Catalog Number: CL488-86266	GenBank Accession Number: BC104798	Purification Method: Protein A purification
Source: Rabbit	GeneID (NCBI): 199675	CloneNo.: 250141G2
Isotype: IgG	UNIPROT ID: Q8IX19	Recommended Dilutions: IF/ICC: 1:50-1:500
Immunogen Catalog Number: AG22616	Full Name: chromosome 19 open reading frame 59	Excitation/Emission maxima wavelengths: 493 nm / 522 nm
	Observed MW: 22/24 kDa	

Applications

Tested Applications: IF/ICC	Positive Controls: IF/ICC : THP-1 cells,
Species Specificity: human	

Background Information

The MCEMP1 gene contains seven exons and was mapped to human chromosome 19p13.3. The epitope-tagged MCEMP1 has been expressed in mammalian cells and found to be localized to the cellular membrane with its C-terminus extending to the outside of the membrane and N-terminus into the cytoplasmic compartment. An evidently increased expression of mast cell expression membrane protein 1 (MCEMP1) has been observed in stroke patients and its expression independently improved the discrimination of 1-month outcome, suggesting the functionality of peripheral blood expression of MCEMP1 as a biomarker for stroke prognosis . (PMID: 30883005, PMID: 31104315, PMID: 15953541)

Storage

Storage:
Store at -20°C. Avoid exposure to light. Stable for one year after shipment.
Storage Buffer:
PBS with 50% glycerol, 0.05% Proclin300, 0.5% BSA, pH7.3
Aliquoting is unnecessary for -20°C storage

For technical support and original validation data for this product please contact:

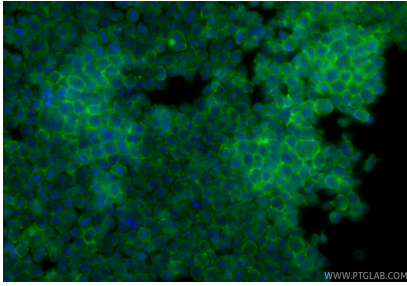
T: 4006900926

E: Proteintech-CN@ptglab.com

W: ptgcn.com

This product is exclusively available under Proteintech Group brand and is not available to purchase from any other manufacturer.

Selected Validation Data



Immunofluorescent analysis of (4% PFA) fixed THP-1 cells using CoraLite® Plus 488 C19orf59 antibody (CL488-86266, Clone: 250141G2) at dilution of 1:200.