

For Research Use Only

CoraLite® Plus 488-conjugated ATP5I Recombinant monoclonal antibody

Catalog Number: CL488-86218-2



Basic Information

Catalog Number:

CL488-86218-2

Source:

Rabbit

Isotype:

IgG

Immunogen Catalog Number:

AG9605

GenBank Accession Number:

BC003679

GeneID (NCBI):

521

UNIPROT ID:

P56385

Full Name:

ATP synthase, H⁺ transporting,
mitochondrial F₀ complex, subunit E

Calculated MW:

69 aa, 8 kDa

Observed MW:

8 kDa

Purification Method:

Protein A purification

CloneNo.:

250815C6

Recommended Dilutions:

IF/ICC: 1:50-1:500

Excitation/Emission maxima
wavelengths:

493 nm / 522 nm

Applications

Tested Applications:

IF/ICC

Species Specificity:

human

Positive Controls:

IF/ICC : HepG2 cells,

Background Information

ATP5I(ATP synthase subunit e) is also named as ATP5K and belongs to the ATPase e subunit family. The ATP5I gene encodes the e subunit of the mitochondrial ATP synthase F₀ complex. Mitochondrial membrane ATP synthase(F₁F₀ ATP synthase or Complex V) produces ATP from ADP in the presence of a proton gradient across the membrane which is generated by electron transport complexes of the respiratory chain. Antisense ATP5I in a human HCC cell line inhibited cell growth suggesting that ATP5I acts through the MAP kinase pathway(PMID:11939412).

Storage

Storage:

Store at -20°C. Avoid exposure to light. Stable for one year after shipment.

Storage Buffer:

PBS with 50% glycerol, 0.05% Proclin300, 0.5% BSA, pH7.3

Aliquoting is unnecessary for -20°C storage

For technical support and original validation data for this product please contact:

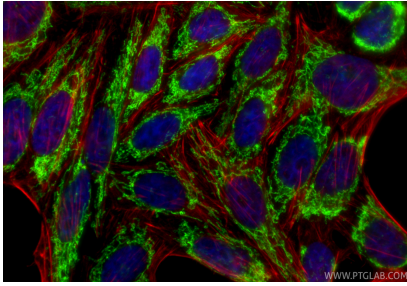
T: 4006900926

E: Proteintech-CN@ptglab.com

W: ptgcn.com

This product is exclusively available under Proteintech Group brand and is not available to purchase from any other manufacturer.

Selected Validation Data



Immunofluorescent analysis of (4% PFA) fixed HepG2 cells using CoraLite® Plus 488 ATP5I antibody (CL488-86218-2, Clone: 250815C6) at dilution of 1:200, CL594-phalloidin (red).