

For Research Use Only

CoraLite® Plus 488-conjugated RPL13 Recombinant monoclonal antibody

Catalog Number: CL488-86205-2



Basic Information

Catalog Number:

CL488-86205-2

Source:

Rabbit

Isotype:

IgG

Immunogen Catalog Number:

AG1814

GenBank Accession Number:

BC014167

GeneID (NCBI):

6137

UNIPROT ID:

P26373

Full Name:

ribosomal protein L13

Calculated MW:

24 kDa

Observed MW:

24 kDa

Purification Method:

Protein A purification

CloneNo.:

250752D2

Recommended Dilutions:

IF/ICC: 1:50-1:500

Excitation/Emission maxima
wavelengths:

493 nm / 522 nm

Applications

Tested Applications:

IF/ICC

Species Specificity:

human, mouse, monkey

Positive Controls:

IF/ICC : HepG2 cells,

Background Information

The mammalian ribosome comprises 79 ribosomal proteins and four rRNAs, which combine in equimolar ratios to form the small (40S) and large (60S) subunits. Ribosome proteins are a direct and critical target of the PI3K pathway in promoting growth.[PMID:15289434]. RPL13 may be a plausible candidate tumor suppressor gene, as knocking down L13 expression using small interfering RNA (siRNA) resulted in drastic attenuation of cancer cell growth with significant G1 and G2/M arrest of the cell cycle[PMID:16786168].

Storage

Storage:

Store at -20°C. Avoid exposure to light. Stable for one year after shipment.

Storage Buffer:

PBS with 50% glycerol, 0.05% Proclin300, 0.5% BSA, pH7.3

Aliquoting is unnecessary for -20°C storage

For technical support and original validation data for this product please contact:

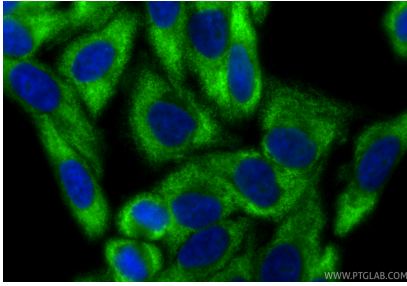
T: 4006900926

E: Proteintech-CN@ptglab.com

W: ptgcn.com

This product is exclusively available under Proteintech Group brand and is not available to purchase from any other manufacturer.

Selected Validation Data



Immunofluorescent analysis of (-20°C Ethanol) fixed HepG2 cells using Coralite® Plus 488 RPL13 antibody (CL488-86205-2, Clone: 250752D2) at dilution of 1:200.