

For Research Use Only

CoraLite® Plus 488-conjugated SCP2/SCPx Recombinant monoclonal antibody

Catalog Number: CL488-86196-3



Basic Information

Catalog Number:

CL488-86196-3

Source:

Rabbit

Isotype:

IgG

Immunogen Catalog Number:

AG5895

GenBank Accession Number:

BC067108

GeneID (NCBI):

6342

UNIPROT ID:

P22307

Full Name:

sterol carrier protein 2

Calculated MW:

59 kDa

Observed MW:

46 kDa, 58 kDa

Purification Method:

Protein A purification

CloneNo.:

250813C8

Recommended Dilutions:

IF/ICC: 1:50-1:500

Excitation/Emission maxima
wavelengths:

493 nm / 522 nm

Applications

Tested Applications:

IF/ICC

Species Specificity:

human, mouse

Positive Controls:

IF/ICC : NIH/3T3 cells, HEK-293 cells

Background Information

SCP2 (Sterol carrier protein-2), also called nonspecific lipid-transfer protein, is thought to play a major role in intracellular lipid transport and metabolism. Mutations of SCP2 have been associated with diseases involving abnormalities in lipid trafficking, such as Zellweger syndrome. The alternative splicing generates 58 kDa SCPx and 13-15 kDa SCP2 proteins, both of which contain a C-terminal SCP2 domain. In addition to the SCP2 domain, SCPx also contains an amino-terminal thiolase domain. The proteolytic cleavage of SCPx occurred when it was imported into peroxisomes, giving rise to a 44-46 kDa thiolase and a 13-15 kDa SCP2. It recognizes the intact 58 kDa SCPx protein as well as 44-46 kDa thiolase (PMID: 35996156).

Storage

Storage:

Store at -20°C. Avoid exposure to light. Stable for one year after shipment.

Storage Buffer:

PBS with 50% glycerol, 0.05% Proclin300, 0.5% BSA, pH7.3

Aliquoting is unnecessary for -20°C storage

For technical support and original validation data for this product please contact:

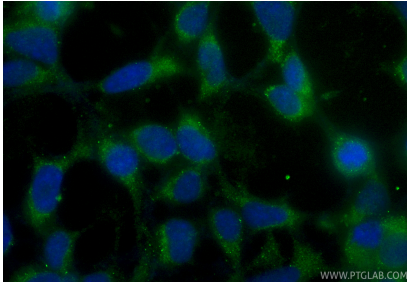
T: 4006900926

E: Proteintech-CN@ptglab.com

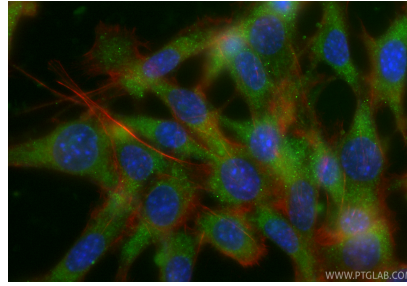
W: ptgcn.com

This product is exclusively available under Proteintech Group brand and is not available to purchase from any other manufacturer.

Selected Validation Data



Immunofluorescent analysis of (-20°C Ethanol) fixed HEK-293 cells using CoraLite® Plus 488 SCP2/SCPx antibody (CL488-86196-3, Clone: 250813C8) at dilution of 1:200.



Immunofluorescent analysis of (-20°C Ethanol) fixed NIH/3T3 cells using CoraLite® Plus 488 SCP2/SCPx antibody (CL488-86196-3, Clone: 250813C8) at dilution of 1:200, CL594-Phalloidin (red).