

For Research Use Only

CoraLite® Plus 488-conjugated CD146/MCAM Recombinant monoclonal antibody

Catalog Number:CL488-86159-3



Basic Information

Catalog Number:

CL488-86159-3

Source:

Rabbit

Isotype:

IgG

Immunogen Catalog Number:

EG2667

GenBank Accession Number:

NM_023061.2

GeneID (NCBI):

84004

UNIPROT ID:

Q8R2Y2-1

Full Name:

melanoma cell adhesion molecule

Calculated MW:

72 kDa

Observed MW:

120-140 kDa

Purification Method:

Protein A purification

CloneNo.:

250806F12

Recommended Dilutions:

IF/ICC: 1:50-1:500

Excitation/Emission maxima
wavelengths:

493 nm / 522 nm

Applications

Tested Applications:

IF/ICC

Species Specificity:

mouse

Positive Controls:

IF/ICC : bEnd.3 cells,

Background Information

CD146, also known as melanoma cell adhesion molecule (MCAM) or MUC18, originally identified as a biomarker of melanoma progression, is a transmembrane glycoprotein of 113-130 kDa, belonging to the immunoglobulin (Ig) superfamily (PMID: 8378324; 25993332). Structurally, it consists of five Ig domains, a transmembrane domain, and a cytoplasmic region. In normal adult tissue, CD146 is primarily expressed by vascular endothelium and smooth muscle. CD146 is a key cell adhesion protein in vascular endothelial cell activity and angiogenesis, and has been used as marker of circulating endothelium cells (CECs) (PMID: 19356677). In addition to the membrane-anchored form of CD146, a soluble form of CD146 (sCD146, 105 kDa) has also been found in human plasma and in the supernatant of cultured human endothelial cells (PMID: 9462829; 19229070; 16374253; 14597988).

Storage

Storage:

Store at -20°C. Avoid exposure to light. Stable for one year after shipment.

Storage Buffer:

PBS with 50% glycerol, 0.05% Proclin300, 0.5% BSA, pH7.3

Aliquoting is unnecessary for -20°C storage

For technical support and original validation data for this product please contact:

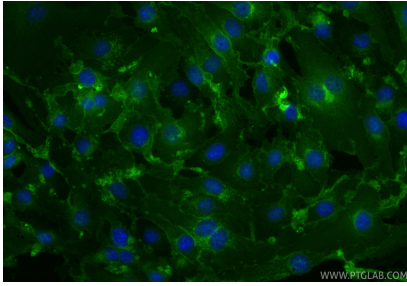
T: 4006900926

E: Proteintech-CN@ptglab.com

W: ptgcn.com

This product is exclusively available under Proteintech Group brand and is not available to purchase from any other manufacturer.

Selected Validation Data



Immunofluorescent analysis of (4% PFA) fixed bEnd.3 cells using Coralite® Plus 488 CD146/MCAM antibody (CL488-86159-3, Clone: 250806F12) at dilution of 1:200.