

For Research Use Only

CoraLite® Plus 488-conjugated KIFC1 Recombinant monoclonal antibody

Catalog Number: CL488-85981



Basic Information

Catalog Number:

CL488-85981

Source:

Rabbit

Isotype:

IgG

Immunogen Catalog Number:

AG14492

GenBank Accession Number:

BC000712

GeneID (NCBI):

3833

UNIPROT ID:

Q9BW19

Full Name:

kinesin family member C1

Calculated MW:

673 aa, 74 kDa

Observed MW:

74 kDa

Purification Method:

Protein A purification

CloneNo.:

250588F10

Recommended Dilutions:

IF/ICC: 1:300-1:1200

Excitation/Emission maxima
wavelengths:

493 nm / 522 nm

Applications

Tested Applications:

IF/ICC

Species Specificity:

human, mouse

Positive Controls:

IF/ICC : HeLa cells,

Background Information

KIFC1 is a molecular motor protein belonging to the kinesin-14 family that has motor domains at the C-terminus. KIFC1 is widely distributed, with highest expression in testis and participating in acrosome biogenesis and vesicle transport. It is also abundant in ovary, spleen, and liver. KIFC1 proteins are generally localized in the perinuclear region, and have been found to be involved chromosome alignment, congression and intracellular DNA transport (PMID: 12826589, PMID: 15236353, PMID: 23543461).

Storage

Storage:

Store at -20°C. Avoid exposure to light. Stable for one year after shipment.

Storage Buffer:

PBS with 50% glycerol, 0.05% Proclin300, 0.5% BSA, pH7.3

Aliquoting is unnecessary for -20°C storage

For technical support and original validation data for this product please contact:

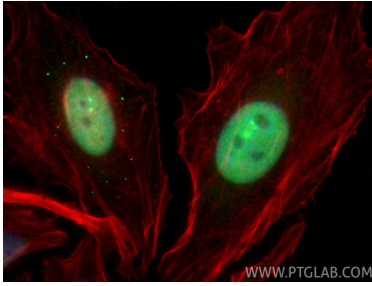
T: 4006900926

E: Proteintech-CN@ptglab.com

W: ptgcn.com

This product is exclusively available under Proteintech Group brand and is not available to purchase from any other manufacturer.

Selected Validation Data



Immunofluorescent analysis of (4% PFA) fixed HeLa cells using CoraLite® Plus 488 KIFC1 antibody (CL488-85981, Clone: 250588F10) at dilution of 1:600, CL594-phalloidin (red).