

For Research Use Only

# CoraLite® Plus 488-conjugated GRK1 Recombinant monoclonal antibody

Catalog Number: CL488-85942



## Basic Information

Catalog Number:

CL488-85942

Source:

Rabbit

Isotype:

IgG

Immunogen Catalog Number:

AG18063

GenBank Accession Number:

BC140945

GeneID (NCBI):

6011

UNIPROT ID:

Q15835

Full Name:

G protein-coupled receptor kinase 1

Calculated MW:

563 aa, 64 kDa

Observed MW:

64 kDa

Purification Method:

Protein A purification

CloneNo.:

250433A4

Recommended Dilutions:

IF-P: 1:50-1:500

Excitation/Emission maxima

wavelengths:

493 nm / 522 nm

## Applications

Tested Applications:

IF-P

Species Specificity:

human, mouse, rat

Positive Controls:

IF-P: mouse eye tissue,

## Background Information

GRK1 (G protein-coupled receptor kinase 1) is also named as RHOK, RK, GPRK1, and belongs to the AGC Ser/Thr protein kinase family. It is involved in quenching of light-induced signal transduction in the photoreceptor. GRK1 is a photoreceptor-specific enzyme that mediates adaptation of photoreceptors to light and protects these cells against light-induced injury.

## Storage

Storage:

Store at -20°C. Avoid exposure to light. Stable for one year after shipment.

Storage Buffer:

PBS with 50% glycerol, 0.05% Proclin300, 0.5% BSA, pH7.3

Aliquoting is unnecessary for -20°C storage

For technical support and original validation data for this product please contact:

T: 4006900926

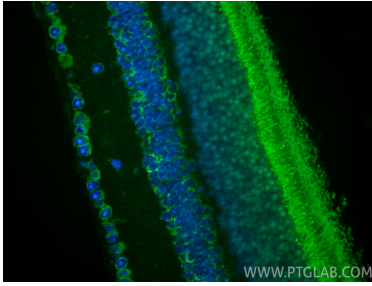
E: [Proteintech-CN@ptglab.com](mailto:Proteintech-CN@ptglab.com)

W: [ptgcn.com](http://ptgcn.com)

This product is exclusively available under Proteintech Group brand and is not available to purchase from any other manufacturer.

---

## Selected Validation Data



Immunofluorescent analysis of (4% PFA) fixed paraffin-embedded mouse eye tissue using CoraLite® Plus 488 GRK1 antibody (CL488-85942, Clone: 250433A4 ) at dilution of 1:200. Heat mediated antigen retrieval with Tris-EDTA buffer (pH 9.0).