

For Research Use Only

CoraLite® Plus 488-conjugated RBBP6 Recombinant monoclonal antibody

Catalog Number: CL488-85884-5



Basic Information

Catalog Number:

CL488-85884-5

Source:

Rabbit

Isotype:

IgG

Immunogen Catalog Number:

AG2484

GenBank Accession Number:

BC029352

GeneID (NCBI):

5930

UNIPROT ID:

Q7Z6E9

Full Name:

retinoblastoma binding protein 6

Calculated MW:

1792 aa, 200 kDa

Observed MW:

250 kDa

Purification Method:

Protein A purification

CloneNo.:

250142C1

Recommended Dilutions:

IF/ICC: 1:50-1:500

Excitation/Emission maxima
wavelengths:

493 nm / 522 nm

Applications

Tested Applications:

IF/ICC

Species Specificity:

human

Positive Controls:

IF/ICC : Caco-2 cells, MCF-7 cells

Background Information

RBBP6 (retinoblastoma binding protein 6) is a multifunctional protein that interacts with both p53 and pRb and has been implicated in mRNA processing. It has also been identified as a putative E3 ubiquitin ligase due to the presence of a RING finger domain [PMID:18851979]. RBBP6 contains an N-terminal ubiquitin-like domain and a cysteine-rich RING finger-like domain, through which it promotes the ubiquitination of p53 by Hdm2 in an E4-like manner [PMID:17470788]. It is implicated in a diverse set of cellular functions, including mRNA metabolism, regulation of the cell cycle, tumorigenesis, and development [PMID:12938151,17470788].

Storage

Storage:

Store at -20°C. Avoid exposure to light. Stable for one year after shipment.

Storage Buffer:

PBS with 50% glycerol, 0.05% Proclin300, 0.5% BSA, pH7.3

Aliquoting is unnecessary for -20°C storage

For technical support and original validation data for this product please contact:

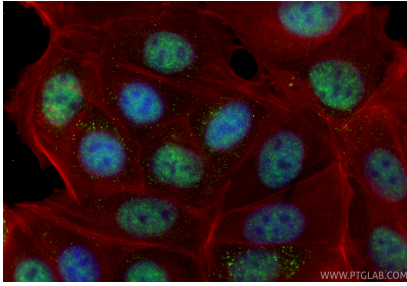
T: 4006900926

E: Proteintech-CN@ptglab.com

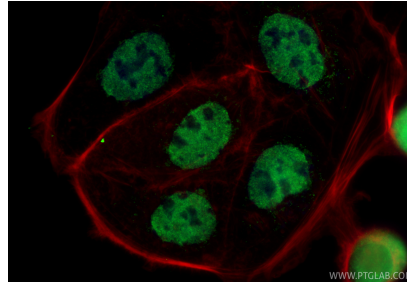
W: ptgcn.com

This product is exclusively available under Proteintech Group brand and is not available to purchase from any other manufacturer.

Selected Validation Data



Immunofluorescent analysis of (4% PFA) fixed MCF-7 cells using CoraLite® Plus 488 RBBP6 antibody (CL488-85884-5, Clone: 250142C1) at dilution of 1:200, CL594-Phalloidin (red).



Immunofluorescent analysis of (4% PFA) fixed Caco-2 cells using CoraLite® Plus 488 RBBP6 antibody (CL488-85884-5, Clone: 250142C1) at dilution of 1:200, CL594-Phalloidin (red).