

For Research Use Only

CoraLite® Plus 488-conjugated ASF1B Recombinant monoclonal antibody

Catalog Number: CL488-85848



Basic Information

Catalog Number:

CL488-85848

Source:

Rabbit

Isotype:

IgG

Immunogen Catalog Number:

AG17763

GenBank Accession Number:

BC010014

GeneID (NCBI):

55723

UNIPROT ID:

Q9NVP2

Full Name:

ASF1 anti-silencing function 1
homolog B (S. cerevisiae)

Calculated MW:

202 aa, 22 kDa

Purification Method:

Protein A purification

CloneNo.:

250195A7

Recommended Dilutions:

IF/ICC: 1:50-1:500

Excitation/Emission maxima
wavelengths:

493 nm / 522 nm

Applications

Tested Applications:

IF/ICC

Species Specificity:

human

Positive Controls:

IF/ICC : A431 cells,

Background Information

ASF1B is a member of the H3/H4 family of histone chaperone proteins and is similar to the anti-silencing function-1 gene in yeast. The encoded protein is the substrate of the tousel-like kinase family of cell cycle-regulated kinases, and may play a key role in modulating the nucleosome structure of chromatin by ensuring a constant supply of histones at sites of nucleosome assembly. This gene encodes a member of the H3/H4 family of histone chaperone proteins and is similar to the anti-silencing function-1 gene in yeast. The encoded protein is the substrate of the tousel-like kinase family of cell cycle-regulated kinases, and may play a key role in modulating the nucleosome structure of chromatin by ensuring a constant supply of histones at sites of nucleosome assembly. This antibody reacts with the ASF1B and ASF1A protein.

Storage

Storage:

Store at -20°C. Avoid exposure to light. Stable for one year after shipment.

Storage Buffer:

PBS with 50% glycerol, 0.05% Proclin300, 0.5% BSA, pH7.3

Aliquoting is unnecessary for -20°C storage

For technical support and original validation data for this product please contact:

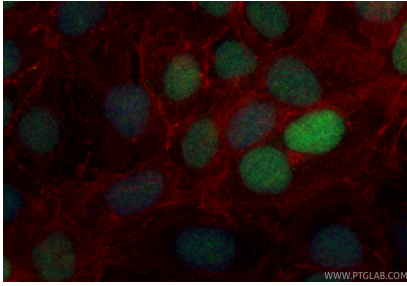
T: 4006900926

E: Proteintech-CN@ptglab.com

W: ptgcn.com

This product is exclusively available under Proteintech Group brand and is not available to purchase from any other manufacturer.

Selected Validation Data



Immunofluorescent analysis of (4% PFA) fixed A431 cells using CoraLite® Plus 488 ASF1B antibody (CL488-85848, Clone: 250195A7) at dilution of 1:200, CL594-Phalloidin (red).