

For Research Use Only

# CoraLite® Plus 488-conjugated SENP3 Recombinant monoclonal antibody

Catalog Number: CL488-85837-3



## Basic Information

Catalog Number: CL488-85837-3	GenBank Accession Number: BC080658	Purification Method: Protein A purification
Source: Rabbit	GeneID (NCBI): 26168	CloneNo.: 250153A9
Isotype: IgG	UNIPROT ID: Q9H4L4	Recommended Dilutions: IF/ICC: 1:50-1:500
Immunogen Catalog Number: AG11911	Full Name: SUMO1/sentrin/SMT3 specific peptidase 3	Excitation/Emission maxima wavelengths: 493 nm / 522 nm
	Calculated MW: 574 aa, 65 kDa	
	Observed MW: 65-70 kDa	

## Applications

Tested Applications: IF/ICC	Positive Controls: IF/ICC : MCF-7 cells,
Species Specificity: human, mouse	

## Background Information

SENP3(Sentrin-specific protease 3) is also named as SSP3, SUSP3 and belongs to the peptidase C48 family. It acts as an essential factor for ribosome biogenesis. SENP3 might regulate the sumoylation of other substrates through directly binding or mediating association with NPM1 at the nucleolus and other subcellular compartments.

## Storage

**Storage:**  
Store at -20°C. Avoid exposure to light. Stable for one year after shipment.  
**Storage Buffer:**  
PBS with 50% glycerol, 0.05% Proclin300, 0.5% BSA, pH7.3  
Aliquoting is unnecessary for -20°C storage

For technical support and original validation data for this product please contact:

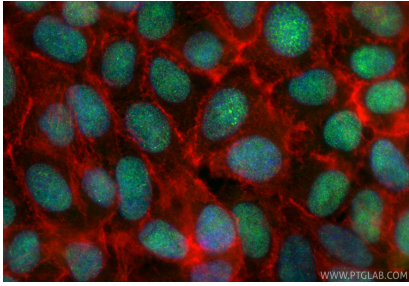
T: 4006900926

E: [Proteintech-CN@ptglab.com](mailto:Proteintech-CN@ptglab.com)

W: [ptgcn.com](http://ptgcn.com)

This product is exclusively available under Proteintech Group brand and is not available to purchase from any other manufacturer.

## Selected Validation Data



Immunofluorescent analysis of (4% PFA) fixed MCF-7 cells using CoraLite® Plus 488 SENP3 antibody (CL488-85837-3, Clone: 250153A9 ) at dilution of 1:200, CL594-Phalloidin (red).