

For Research Use Only

# CoraLite® Plus 488-conjugated TOMM40 Recombinant antibody

Catalog Number: CL488-85773-4



## Basic Information

<b>Catalog Number:</b> CL488-85773-4	<b>GenBank Accession Number:</b> BC017224	<b>Purification Method:</b> Protein A purification
<b>Concentration:</b> 1000 ug/ml	<b>GeneID (NCBI):</b> 10452	<b>CloneNo.:</b> 250010E12
<b>Source:</b> Rabbit	<b>UNIPROT ID:</b> O96008	<b>Recommended Dilutions:</b> IF/ICC: 1:50-1:500
<b>Isotype:</b> IgG	<b>Full Name:</b> translocase of outer mitochondrial membrane 40 homolog (yeast)	<b>Excitation/Emission maxima wavelengths:</b> 493 nm / 522 nm
<b>Immunogen Catalog Number:</b> AG13065	<b>Calculated MW:</b> 38 kDa	
	<b>Observed MW:</b> 38 kDa	

## Applications

<b>Tested Applications:</b> IF/ICC	<b>Positive Controls:</b> IF/ICC : HepG2 cells,
<b>Species Specificity:</b> human, mouse, rat	

## Background Information

The translocase of outer mitochondria membrane 40 (TOMM40, also known as TOM40), located in the center of the TOM complex, is a channel-forming subunit of translocase. It can facilitate the fluid movement of preproteins into the mitochondria by associating with TOMM20. TOMM40 plays a role in the assembly of the mitochondrial membrane respiratory chain NADH dehydrogenase (Complex I) by forming a complex with BCAP31 and mediating the translocation of Complex I components from the cytosol to the mitochondria (PMID: 31206022). TOMM40 has been reported to be associated with late-onset neurodegenerative diseases such as Alzheimer's disease and Parkinson's disease.

## Storage

**Storage:**  
Store at -20°C. Avoid exposure to light. Stable for one year after shipment.  
**Storage Buffer:**  
PBS with 50% glycerol, 0.05% Proclin300, 0.5% BSA, pH7.3  
**Aliquoting is unnecessary for -20°C storage**

For technical support and original validation data for this product please contact:

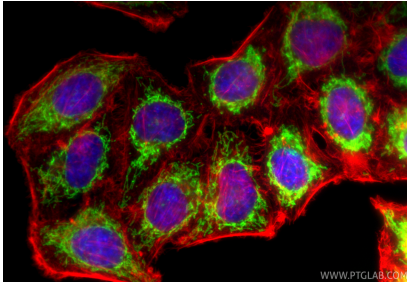
T: 4006900926

E: [Proteintech-CN@ptglab.com](mailto:Proteintech-CN@ptglab.com)

W: [ptgcn.com](http://ptgcn.com)

**This product is exclusively available under Proteintech Group brand and is not available to purchase from any other manufacturer.**

## Selected Validation Data



Immunofluorescent analysis of (4% PFA) fixed HepG2 cells using CoraLite® Plus 488 TOMM40 antibody (CL488-85773-4, Clone: 250010E12 ) at dilution of 1:200, CL594-Phalloidin (red).