

For Research Use Only

# CoraLite® Plus 488-conjugated PELO Recombinant monoclonal antibody

Catalog Number: CL488-85743



## Basic Information

Catalog Number: CL488-85743	GenBank Accession Number: BC005889	Purification Method: Protein A purification
Source: Rabbit	GeneID (NCBI): 53918	CloneNo.: 243137F4
Isotype: IgG	UNIPROT ID: Q9BRX2	Recommended Dilutions: IF/ICC: 1:50-1:500
Immunogen Catalog Number: AG0873	Full Name: pelota homolog (Drosophila)	Excitation/Emission maxima wavelengths: 493 nm / 522 nm
	Calculated MW: 43 kDa	
	Observed MW: 43-45 kDa	

## Applications

Tested Applications: IF/ICC	Positive Controls: IF/ICC : HeLa cells, A549 cells
Species Specificity: human	

## Background Information

The Pelo gene was originally identified in a mutagenesis screen for spermatogenesis-specific genes of *Drosophila melanogaster*. The PELO is required for the meiotic division during the G2/M transition, and functions in recognizing stalled ribosomes and triggering endonucleolytic cleavage of the mRNA, a mechanism to release non-functional ribosomes and degrade damaged mRNAs [PMID:12556505]. It may participate in the machinery of protein synthesis or in the regulation of mRNA translation [PMID:9584085].

## Storage

**Storage:**  
Store at -20°C. Avoid exposure to light. Stable for one year after shipment.  
**Storage Buffer:**  
PBS with 50% glycerol, 0.05% Proclin300, 0.5% BSA, pH7.3  
Aliquoting is unnecessary for -20°C storage

For technical support and original validation data for this product please contact:

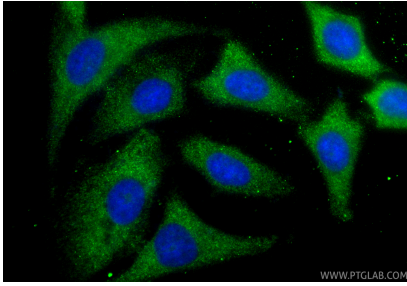
T: 4006900926

E: [Proteintech-CN@ptglab.com](mailto:Proteintech-CN@ptglab.com)

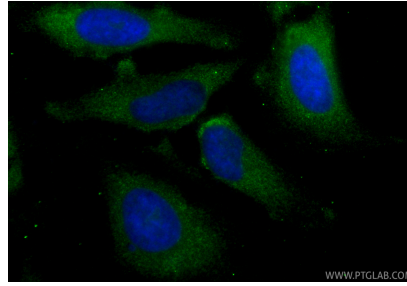
W: [ptgcn.com](http://ptgcn.com)

This product is exclusively available under Proteintech Group brand and is not available to purchase from any other manufacturer.

## Selected Validation Data



Immunofluorescent analysis of (-20°C Methanol) fixed A549 cells using CoraLite® Plus 488 PELO antibody (CL488-85743, Clone: 243137F4 ) at dilution of 1:200.



Immunofluorescent analysis of (-20°C Methanol) fixed HeLa cells using CoraLite® Plus 488 PELO antibody (CL488-85743, Clone: 243137F4 ) at dilution of 1:200.