

For Research Use Only

# CoraLite® Plus 488-conjugated VAMP8 Recombinant monoclonal antibody

Catalog Number: CL488-85400-4



## Basic Information

Catalog Number: CL488-85400-4	GenBank Accession Number: BC001634	Purification Method: Protein A purification
Source: Rabbit	GeneID (NCBI): 8673	CloneNo.: 242830B11
Isotype: IgG	UNIPROT ID: Q9BV40	Recommended Dilutions: IF/ICC: 1:50-1:500
Immunogen Catalog Number: AG7903	Full Name: vesicle-associated membrane protein 8 (endobrevin)	Excitation/Emission maxima wavelengths: 493 nm / 522 nm
	Calculated MW: 11 kDa	
	Observed MW: 15 kDa	

## Applications

Tested Applications: IF/ICC	Positive Controls: IF/ICC : HeLa cells, HEK-293 cells
Species Specificity: human, mouse, rat	

## Background Information

VAMP8, also named as endobrevin, is a member of the vesicle-associated membrane protein (VAMP)/synaptobrevin family and the SNARE (soluble NSF-attachment protein receptor) superfamily. Characterized by a common sequence called the SNARE motif, SNARE proteins are involved in membrane fusion and vesicular transport (PMID: 11252968). VAMP8 is involved in autophagy through the direct control of autophagosome membrane fusion with the lysosome membrane. It is required for dense-granule secretion in platelets and plays a role in regulated enzyme secretion in pancreatic acinar cells. VAMP8 is also involved in the abscission of the midbody during cell division, which leads to completely separate daughter cells.

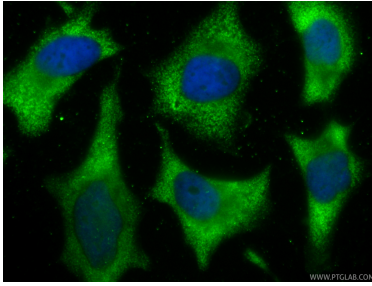
## Storage

**Storage:**  
Store at -20°C. Avoid exposure to light. Stable for one year after shipment.  
**Storage Buffer:**  
PBS with 50% glycerol, 0.05% Proclin300, 0.5% BSA, pH7.3  
Aliquoting is unnecessary for -20°C storage

For technical support and original validation data for this product please contact:  
T: 4006900926 E: Proteintech-CN@ptglab.com W: ptgcn.com

This product is exclusively available under Proteintech Group brand and is not available to purchase from any other manufacturer.

## Selected Validation Data



Immunofluorescent analysis of (-20°C Ethanol) fixed HeLa cells using CoraLite® Plus 488 VAMP8 antibody (CL488-85400-4, Clone: 242830B11 ) at dilution of 1:200.