

For Research Use Only

CoraLite® Plus 488-conjugated FCER1G Recombinant antibody

Catalog Number: CL488-85390



Basic Information

Catalog Number:

CL488-85390

Concentration:

1000 ug/ml

Source:

Rabbit

Isotype:

IgG

Immunogen Catalog Number:

AG4442

GenBank Accession Number:

BC033872

GeneID (NCBI):

2207

UNIPROT ID:

P30273

Full Name:

Fc fragment of IgE, high affinity I,
receptor for; gamma polypeptide

Calculated MW:

87 aa, 10 kDa

Purification Method:

Protein A purification

CloneNo.:

242829C5

Recommended Dilutions:

IF/ICC: 1:250-1:1000

Excitation/Emission maxima
wavelengths:

493 nm / 522 nm

Applications

Tested Applications:

IF/ICC

Species Specificity:

human, mouse

Positive Controls:

IF/ICC : RAW 264.7 cells,

Background Information

FCER1G (Fc receptor gamma-chain, FcRgamma), also known as Fc-epsilon RI-gamma, or IgE Fc receptor subunit gamma (FceRI gamma), is a component of the high-affinity immunoglobulin E (IgE) receptor (Fc epsilon RI) which is a tetrameric complex of one alpha subunit, one beta subunit, and two disulfide-linked gamma subunits (PMID: 2146219; 2531187). Fc epsilon RI is present exclusively on mast cells and basophils, mediating allergic inflammatory signaling (PMID: 17438574). FCER1G is widely expressed and contains an immunoreceptor tyrosine-based activation motif (ITAM) that transduces activation signals from various immunoreceptors (PMID: 19098920).

Storage

Storage:

Store at -20°C. Avoid exposure to light. Stable for one year after shipment.

Storage Buffer:

PBS with 50% glycerol, 0.05% Proclin300, 0.5% BSA, pH7.3

Aliquoting is unnecessary for -20°C storage

For technical support and original validation data for this product please contact:

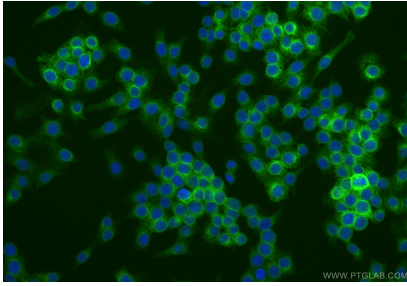
T: 4006900926

E: Proteintech-CN@ptglab.com

W: ptgcn.com

This product is exclusively available under Proteintech Group brand and is not available to purchase from any other manufacturer.

Selected Validation Data



Immunofluorescent analysis of (4% PFA) fixed RAW 264.7 cells using CoraLite® Plus 488 FCER1G antibody (CL488-85390, Clone: 242829C5) at dilution of 1:500.