

For Research Use Only



CoraLite® Plus 488-conjugated SLC25A6-Specific Recombinant monoclonal antibody

Catalog Number: **CL488-85368**

Basic Information

Catalog Number: CL488-85368	GenBank Accession Number: NM_001636	Purification Method: Protein A purification
Source: Rabbit	GeneID (NCBI): 293	CloneNo.: 242652A8
Isotype: IgG	UNIPROT ID: P12236	Recommended Dilutions: IF/ICC: 1:50-1:500
	Full Name: solute carrier family 25 (mitochondrial carrier; adenine nucleotide translocator), member 6	Excitation/Emission maxima wavelengths: 493 nm / 522 nm
	Calculated MW: 33 kDa	
	Observed MW: 30-33 kDa	

Applications

Tested Applications: IF/ICC	Positive Controls: IF/ICC : A549 cells, HepG2 cells
Species Specificity: human, mouse, rat	

Background Information

SLC25A6, also known as ANT3 (adenine nucleotide translocase 3), is a member of the solute carrier family 25, specifically the mitochondrial carrier subfamily. As part of the mitochondrial carrier family, SLC25A6 plays a role in the mitochondrial energy production process by facilitating the exchange of metabolites necessary for oxidative phosphorylation (PMID: 23506884).

Storage

Storage:
Store at -20°C. Avoid exposure to light. Stable for one year after shipment.
Storage Buffer:
PBS with 50% glycerol, 0.05% Proclin300, 0.5% BSA, pH7.3
Aliquoting is unnecessary for -20°C storage

For technical support and original validation data for this product please contact:

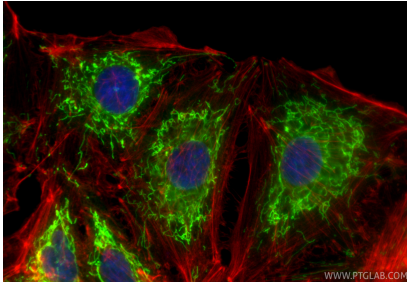
T: 4006900926

E: Proteintech-CN@ptglab.com

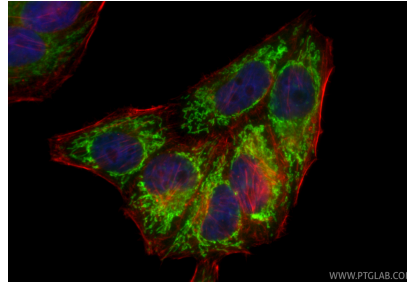
W: ptgcn.com

This product is exclusively available under Proteintech Group brand and is not available to purchase from any other manufacturer.

Selected Validation Data



Immunofluorescent analysis of (4% PFA) fixed A549 cells using CoraLite® Plus 488 SLC25A6-Specific antibody (CL488-85368, Clone: 242652A8) at dilution of 1:200, CL594-phalloidin (red).



Immunofluorescent analysis of (4% PFA) fixed HepG2 cells using CoraLite® Plus 488 SLC25A6-Specific antibody (CL488-85368, Clone: 242652A8) at dilution of 1:200, CL594-phalloidin (red).