

For Research Use Only

# CoraLite® Plus 488-conjugated SYN1-Specific Recombinant monoclonal antibody

Catalog Number: **CL488-85360**



## Basic Information

Catalog Number:

CL488-85360

Source:

Rabbit

Isotype:

IgG

GenBank Accession Number:

NM\_006950

GeneID (NCBI):

6853

UNIPROT ID:

P17600

Full Name:

synapsin I

Calculated MW:

74 kDa

Observed MW:

70-80 kDa

Purification Method:

Protein A purification

CloneNo.:

242415H5

Recommended Dilutions:

IF-P: 1:50-1:500

Excitation/Emission maxima wavelengths:

493 nm / 522 nm

## Applications

Tested Applications:

IF-P

Species Specificity:

human, mouse

Positive Controls:

IF-P: rat brain tissue,

## Background Information

SYN1, also named Brain protein 4.1, belongs to the synapsin family. SYN1 is a neuronal phosphoprotein that coats synaptic vesicles, binds to the cytoskeleton, and is believed to function in the regulation of neurotransmitter release. The complex formed with NOS1 and CAPON proteins is necessary for specific nitric-oxid functions at a presynaptic level. Defects in SYN1 are a cause of epilepsy X-linked with variable learning disabilities and behavior disorders (XELBD).

## Storage

Storage:

Store at -20°C. Avoid exposure to light. Stable for one year after shipment.

Storage Buffer:

PBS with 50% glycerol, 0.05% Proclin300, 0.5% BSA, pH7.3

Aliquoting is unnecessary for -20°C storage

For technical support and original validation data for this product please contact:

T: 4006900926

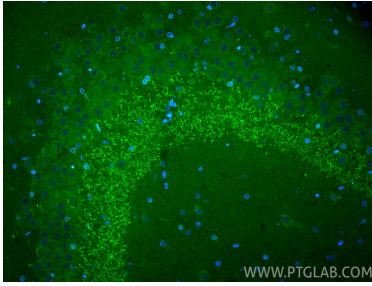
E: [Proteintech-CN@ptglab.com](mailto:Proteintech-CN@ptglab.com)

W: [ptgcn.com](http://ptgcn.com)

This product is exclusively available under Proteintech Group brand and is not available to purchase from any other manufacturer.

---

## Selected Validation Data



Immunofluorescent analysis of (4% PFA) fixed paraffin-embedded rat brain tissue using CoraLite® Plus 488 SYN1-Specific antibody (CL488-85360, Clone: 242415H5 ) at dilution of 1:200. Heat mediated antigen retrieval with Tris-EDTA buffer (pH 9.0).