

For Research Use Only

CoraLite® Plus 488-conjugated ATP7B-Specific Recombinant monoclonal antibody

Catalog Number: CL488-85288-2



Basic Information

Catalog Number:

CL488-85288-2

Source:

Rabbit

Isotype:

IgG

GenBank Accession Number:

NM_000053

GeneID (NCBI):

540

UNIPROT ID:

P35670

Full Name:

ATPase, Cu⁺⁺ transporting, beta polypeptide

Calculated MW:

157 kDa

Observed MW:

150 kDa

Purification Method:

Protein A purification

CloneNo.:

242827B3

Recommended Dilutions:

IF-P: 1:50-1:500

Excitation/Emission maxima wavelengths:

493 nm / 522 nm

Applications

Tested Applications:

IF-P

Species Specificity:

human, mouse, rat

Positive Controls:

IF-P: mouse liver tissue,

Background Information

ATP7B, also named as PWD, WC1 and WND, belongs to the cation transport ATPase (P-type) family and Type IB subfamily. ATP7B is involved in the export of copper out of the cells, such as the efflux of hepatic copper into the bile. ATP7B catalyzes the reaction: ATP + H₂O + Cu²⁺(In) = ADP + phosphate + Cu²⁺(Out). Defects in ATP7B are the cause of Wilson disease (WD). This antibody is specific to ATP7B.

Storage

Storage:

Store at -20°C. Avoid exposure to light. Stable for one year after shipment.

Storage Buffer:

PBS with 50% glycerol, 0.05% Proclin300, 0.5% BSA, pH7.3

Aliquoting is unnecessary for -20°C storage

For technical support and original validation data for this product please contact:

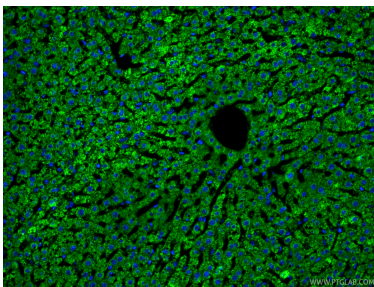
T: 4006900926

E: Proteintech-CN@ptglab.com

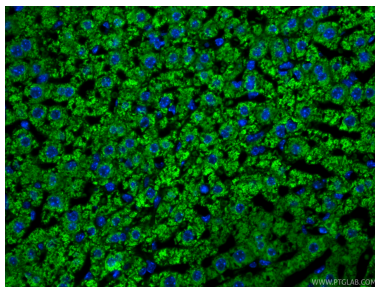
W: ptgcn.com

This product is exclusively available under Proteintech Group brand and is not available to purchase from any other manufacturer.

Selected Validation Data



Immunofluorescent analysis of (4% PFA) fixed paraffin-embedded mouse liver tissue using CoraLite® Plus 488 ATP7B-Specific antibody (CL488-85288-2, Clone: 242827B3) at dilution of 1:200. Heat mediated antigen retrieval with Tris-EDTA buffer (pH 9.0).



Immunofluorescent analysis of (4% PFA) fixed paraffin-embedded mouse liver tissue using CoraLite® Plus 488 ATP7B-Specific antibody (CL488-85288-2, Clone: 242827B3) at dilution of 1:200. Heat mediated antigen retrieval with Tris-EDTA buffer (pH 9.0).