

For Research Use Only

CoraLite® Plus 488-conjugated RFC1 Recombinant monoclonal antibody

Catalog Number: CL488-85148-4



Basic Information

Catalog Number:

CL488-85148-4

Source:

Rabbit

Isotype:

IgG

Immunogen Catalog Number:

AG13585

GenBank Accession Number:

BC051751

GeneID (NCBI):

5981

UNIPROT ID:

P35251

Full Name:

replication factor C (activator 1) 1,

145kDa

Calculated MW:

128 kDa

Observed MW:

140 kDa

Purification Method:

Protein A purification

CloneNo.:

242818H6

Recommended Dilutions:

IF/ICC: 1:50-1:500

Excitation/Emission maxima

wavelengths:

493 nm / 522 nm

Applications

Tested Applications:

IF/ICC

Species Specificity:

human

Positive Controls:

IF/ICC : HeLa cells,

Background Information

Replication factor C subunit 1 (RFC1) is a pentameric DNA polymerase accessory protein involved in DNA replication and repair (PMID: 10051561). It was reported as a cause of cerebellar ataxia with neuropathy and vestibular areflexia syndrome (CANVAS) (PMID: 30926972).

Storage

Storage:

Store at -20°C. Avoid exposure to light. Stable for one year after shipment.

Storage Buffer:

PBS with 50% glycerol, 0.05% Proclin300, 0.5% BSA, pH7.3

Aliquoting is unnecessary for -20°C storage

For technical support and original validation data for this product please contact:

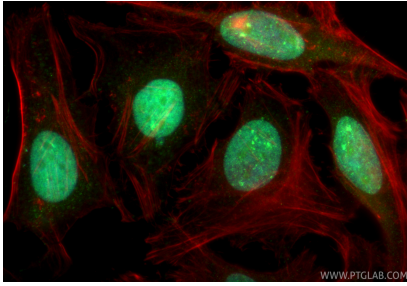
T: 4006900926

E: Proteintech-CN@ptglab.com

W: ptgcn.com

This product is exclusively available under Proteintech Group brand and is not available to purchase from any other manufacturer.

Selected Validation Data



Immunofluorescent analysis of (4% PFA) fixed HeLa cells using Coralite® Plus 488 RFC1 antibody (CL488-85148-4, Clone: 242818H6) at dilution of 1:200, CL594-Phalloidin (red).