

For Research Use Only

CoraLite® Plus 488-conjugated HCLS1 Recombinant antibody

Catalog Number: CL488-85114



Basic Information

Catalog Number: CL488-85114	GenBank Accession Number: BC016758	Purification Method: Protein A purification
Concentration: 1000 ug/ml	GeneID (NCBI): 3059	CloneNo.: 242825E4
Source: Rabbit	UNIPROT ID: P14317	Recommended Dilutions: IF/ICC: 1:50-1:500
Isotype: IgG	Full Name: hematopoietic cell-specific Lyn substrate 1	Excitation/Emission maxima wavelengths: 493 nm / 522 nm
Immunogen Catalog Number: AG8645	Calculated MW: 486 aa, 54 kDa	
	Observed MW: 75 kDa	

Applications

Tested Applications: IF/ICC	Positive Controls: IF/ICC : Jurkat cells,
Species Specificity: human, mouse, rat	

Background Information

Hematopoietic cell-specific Lyn substrate 1 (HS1, HCLS1, LckBP1 and p75) is a 75-kDa intracellular protein expressed in cells of lymphohemopoietic origin. It was originally identified in B-lymphocytes as a major substrate of B-cell receptor (BCR)-induced phosphorylation after antigen (Ag) stimulation. It's a substrate of the antigen receptor-coupled tyrosine kinase. HCLS1 plays a role in antigen receptor signaling for both clonal expansion and deletion in lymphoid cells.

Storage

Storage:
Store at -20°C. Avoid exposure to light. Stable for one year after shipment.
Storage Buffer:
PBS with 50% glycerol, 0.05% Proclin300, 0.5% BSA, pH7.3
Aliquoting is unnecessary for -20°C storage

For technical support and original validation data for this product please contact:

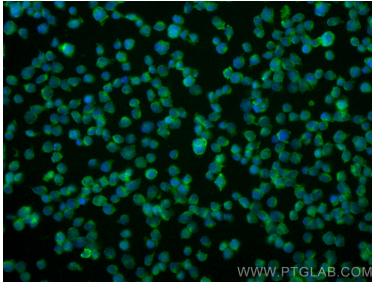
T: 4006900926

E: Proteintech-CN@ptglab.com

W: ptgcn.com

This product is exclusively available under Proteintech Group brand and is not available to purchase from any other manufacturer.

Selected Validation Data



Immunofluorescent analysis of (4% PFA) fixed Jurkat cells using CoraLite® Plus 488 HCLS1 antibody (CL488-85114, Clone: 242825E4) at dilution of 1:200.