

For Research Use Only

# CoraLite® Plus 488-conjugated MRPL11 Recombinant antibody

Catalog Number: CL488-85109-4



## Basic Information

Catalog Number:

CL488-85109-4

Concentration:

1000 ug/ml

Source:

Rabbit

Isotype:

IgG

Immunogen Catalog Number:

AG7899

GenBank Accession Number:

BC005002

GeneID (NCBI):

65003

UNIPROT ID:

Q9Y3B7

Full Name:

mitochondrial ribosomal protein L11

Calculated MW:

21 kDa

Purification Method:

Protein A purification

CloneNo.:

242768G1

Recommended Dilutions:

IF/ICC: 1:50-1:500

Excitation/Emission maxima

wavelengths:

493 nm / 522 nm

## Applications

Tested Applications:

IF/ICC

Species Specificity:

human

Positive Controls:

IF/ICC : HeLa cells,

## Background Information

### Storage

Storage:

Store at -20°C. Avoid exposure to light. Stable for one year after shipment.

Storage Buffer:

PBS with 50% glycerol, 0.05% Proclin300, 0.5% BSA, pH7.3

Aliquoting is unnecessary for -20°C storage

For technical support and original validation data for this product please contact:

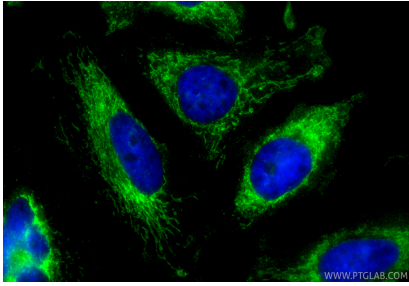
T: 4006900926

E: [Proteintech-CN@ptglab.com](mailto:Proteintech-CN@ptglab.com)

W: [ptgcn.com](http://ptgcn.com)

This product is exclusively available under Proteintech Group brand and is not available to purchase from any other manufacturer.

## Selected Validation Data



Immunofluorescent analysis of (4% PFA) fixed HeLa cells using CoraLite® Plus 488 MRPL11 antibody (CL488-85109-4, Clone: 242768G1 ) at dilution of 1:200.