

For Research Use Only

# CoraLite® Plus 488-conjugated SYTL5 Recombinant antibody

Catalog Number: CL488-85108-5



## Basic Information

Catalog Number:

CL488-85108-5

Concentration:

1000 ug/ml

Source:

Rabbit

Isotype:

IgG

Immunogen Catalog Number:

AG21698

GenBank Accession Number:

BC131585

GeneID (NCBI):

94122

UNIPROT ID:

Q8TDW5

Full Name:

synaptotagmin-like 5

Calculated MW:

730 aa, 81 kDa

Observed MW:

82 kDa

Purification Method:

Protein A purification

CloneNo.:

242838D12

Recommended Dilutions:

IF-P: 1:50-1:500

Excitation/Emission maxima  
wavelengths:

493 nm / 522 nm

## Applications

Tested Applications:

IF-P

Species Specificity:

human, rat

Positive Controls:

IF-P: rat brain tissue,

## Background Information

SYTL5, also known as SLP5, is a member of the synaptotagmin-like protein (Slp) family. Members of this family are characterized by the presence of an N-terminal Slp homology domain (SHD), which functions as a Rab27-binding domain, and C-terminal tandem C2 domains, putative Ca(2+)-binding motifs. SYTL5 promotes the development and progression of papillary thyroid carcinoma (PTC) by activating the NF- $\kappa$ B signaling pathway (PMID: 36378561).

## Storage

Storage:

Store at -20°C. Avoid exposure to light. Stable for one year after shipment.

Storage Buffer:

PBS with 50% glycerol, 0.05% Proclin300, 0.5% BSA, pH7.3

Aliquoting is unnecessary for -20°C storage

For technical support and original validation data for this product please contact:

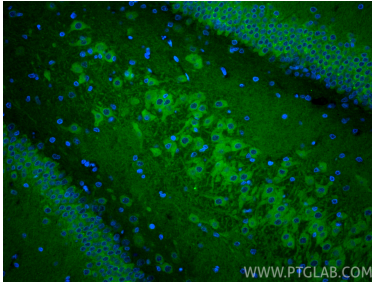
T: 4006900926

E: [Proteintech-CN@ptglab.com](mailto:Proteintech-CN@ptglab.com)

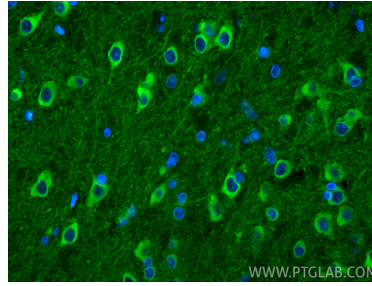
W: [ptgcn.com](http://ptgcn.com)

This product is exclusively available under Proteintech Group brand and is not available to purchase from any other manufacturer.

## Selected Validation Data



Immunofluorescent analysis of (4% PFA) fixed paraffin-embedded rat brain tissue using CoraLite® Plus 488 SYTL5 antibody (CL488-85108-5, Clone: 242838D12 ) at dilution of 1:200. Heat mediated antigen retrieval with Tris-EDTA buffer (pH 9.0).



Immunofluorescent analysis of (4% PFA) fixed paraffin-embedded rat brain tissue using CoraLite® Plus 488 SYTL5 antibody (CL488-85108-5, Clone: 242838D12 ) at dilution of 1:200. Heat mediated antigen retrieval with Tris-EDTA buffer (pH 9.0).