

For Research Use Only

# CoraLite® Plus 488-conjugated DCP1A Recombinant antibody

Catalog Number: CL488-85047-5



## Basic Information

Catalog Number:

CL488-85047-5

Concentration:

1000 ug/ml

Source:

Rabbit

Isotype:

IgG

Immunogen Catalog Number:

AG18027

GenBank Accession Number:

BC007439

GeneID (NCBI):

55802

UNIPROT ID:

Q9NPI6

Full Name:

DCP1 decapping enzyme homolog A  
(S. cerevisiae)

Calculated MW:

582 aa, 63 kDa

Observed MW:

70-75 kDa

Purification Method:

Protein A purification

CloneNo.:

242553F2

Recommended Dilutions:

IF/ICC: 1:50-1:500

Excitation/Emission maxima  
wavelengths:

493 nm / 522 nm

## Applications

Tested Applications:

IF/ICC

Species Specificity:

human, mouse, rat

Positive Controls:

IF/ICC : HepG2 cells,

## Background Information

DCP1 decapping enzyme homolog A (S. cerevisiae), known as mRNA-decapping enzyme 1A (DCP1A), is necessary for the degradation of mRNAs, both in normal mRNA turnover and in nonsense-mediated mRNA decay. Removes the 7-methyl guanine cap structure from mRNA molecules, yielding a 5'-phosphorylated mRNA fragment and 7m-GDP. Contributes to the transactivation of target genes after stimulation by TGFβ1. This antibody specifically reacts with the 70kd DCP1A protein.

## Storage

Storage:

Store at -20°C. Avoid exposure to light. Stable for one year after shipment.

Storage Buffer:

PBS with 50% glycerol, 0.05% Proclin300, 0.5% BSA, pH7.3

Aliquoting is unnecessary for -20°C storage

For technical support and original validation data for this product please contact:

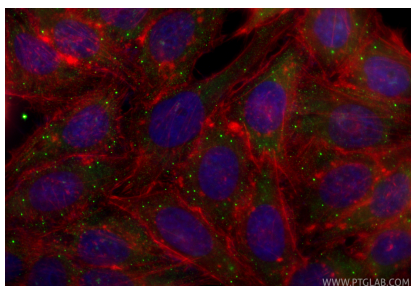
T: 4006900926

E: [Proteintech-CN@ptglab.com](mailto:Proteintech-CN@ptglab.com)

W: [ptgcn.com](http://ptgcn.com)

This product is exclusively available under Proteintech Group brand and is not available to purchase from any other manufacturer.

## Selected Validation Data



Immunofluorescent analysis of (-20°C Ethanol) fixed HepG2 cells using CoraLite® Plus 488 DCP1A antibody (CL488-85047-5, Clone: 242553F2 ) at dilution of 1:200, CL594-Phalloidin (red).