

For Research Use Only

# CoraLite® Plus 488-conjugated KIF17 Recombinant monoclonal antibody

Catalog Number:CL488-85046



## Basic Information

Catalog Number:

CL488-85046

Source:

Rabbit

Isotype:

IgG

Immunogen Catalog Number:

AG6217

GenBank Accession Number:

BC065927

GeneID (NCBI):

57576

UNIPROT ID:

Q9P2E2

Full Name:

kinesin family member 17

Calculated MW:

115 kDa

Observed MW:

170 kDa

Purification Method:

Protein A purification

CloneNo.:

242469G4

Recommended Dilutions:

IF/ICC: 1:50-1:500

Excitation/Emission maxima  
wavelengths:

493 nm / 522 nm

## Applications

Tested Applications:

IF/ICC

Species Specificity:

human, mouse, rat

Positive Controls:

IF/ICC : HepG2 cells, HeLa cells

## Background Information

KIF17 is a kinesin superfamily member, encoding a neuron-specific molecular motor. In neurons, KIF17 is responsible for the specialized transport of the N-methyl-D-aspartate receptor NR2B subunit, the glutamate receptor GluR5, and the potassium channel Kv4.2 from the cell body to the dendrites (PMID: 23762210).

## Storage

Storage:

Store at -20°C. Avoid exposure to light. Stable for one year after shipment.

Storage Buffer:

PBS with 50% glycerol, 0.05% Proclin300, 0.5% BSA, pH7.3

Aliquoting is unnecessary for -20°C storage

For technical support and original validation data for this product please contact:

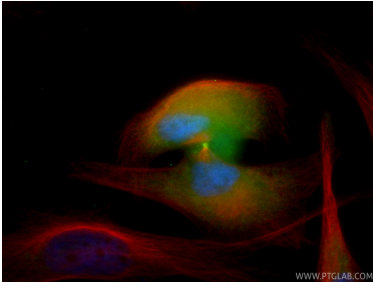
T: 4006900926

E: [Proteintech-CN@ptglab.com](mailto:Proteintech-CN@ptglab.com)

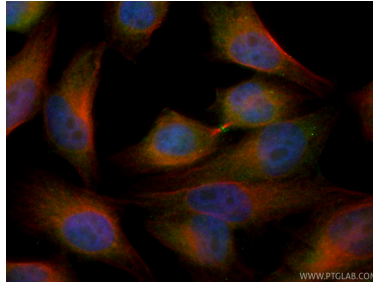
W: [ptgcn.com](http://ptgcn.com)

**This product is exclusively available under Proteintech Group brand and is not available to purchase from any other manufacturer.**

## Selected Validation Data



Immunofluorescent analysis of (4% PFA) fixed HeLa cells using CoraLite® Plus 488 KIF17 antibody (CL488-85046, Clone: 242469G4) at dilution of 1:200, Alpha Tubulin antibody (66031-1-Ig, Clone: 1E4C11, red).



Immunofluorescent analysis of (4% PFA) fixed HepG2 cells using CoraLite® Plus 488 KIF17 antibody (CL488-85046, Clone: 242469G4) at dilution of 1:200, Alpha Tubulin antibody (66031-1-Ig, Clone: 1E4C11, red).