

For Research Use Only

CoraLite® Plus 488-conjugated SYNGAP1 Recombinant antibody

Catalog Number: CL488-85045



Basic Information

Catalog Number:

CL488-85045

Concentration:

1000 ug/ml

Source:

Rabbit

Isotype:

IgG

GenBank Accession Number:

NM_006772

GeneID (NCBI):

8831

UNIPROT ID:

Q96PVO

Full Name:

synaptic Ras GTPase activating protein 1 homolog (rat)

Calculated MW:

1343 aa, 148 kDa

Observed MW:

140 kDa

Purification Method:

Protein A purification

CloneNo.:

242255E3

Recommended Dilutions:

IF/ICC: 1:50-1:500

Excitation/Emission maxima wavelengths:

493 nm / 522 nm

Applications

Tested Applications:

IF/ICC

Species Specificity:

human, mouse, rat

Positive Controls:

IF/ICC : U-251 cells,

Background Information

SYNGAP1, also named as KIAA1938, is the major constituent of the PSD essential for postsynaptic signaling. It's an inhibitory regulator of the Ras-cAMP pathway. SYNGAP1 is a member of the NMDAR signaling complex in excitatory synapses, it may play a role in NMDAR-dependent control of AMPAR potentiation, AMPAR membrane trafficking and synaptic plasticity. SYNGAP1 regulates AMPAR-mediated miniature excitatory postsynaptic currents. SYNGAP1 may be involved in certain forms of brain injury, leading to long-term learning and memory deficits. Defects in SYNGAP1 are the cause of mental retardation autosomal dominant type 5 (MRD5).

Storage

Storage:

Store at -20°C. Avoid exposure to light. Stable for one year after shipment.

Storage Buffer:

PBS with 50% glycerol, 0.05% Proclin300, 0.5% BSA, pH7.3

Aliquoting is unnecessary for -20°C storage

For technical support and original validation data for this product please contact:

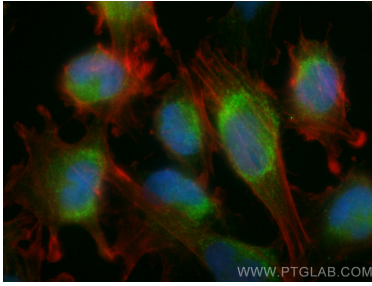
T: 4006900926

E: Proteintech-CN@ptglab.com

W: ptgcn.com

This product is exclusively available under Proteintech Group brand and is not available to purchase from any other manufacturer.

Selected Validation Data



Immunofluorescent analysis of (4% PFA) fixed U-251 cells using CoraLite® Plus 488 SYNGAP1 antibody (CL488-85045, Clone: 242255E3) at dilution of 1:200, CL594-Phalloidin (red).